

**APPENDIX Q
BUILT HERITAGE TECHNICAL SUPPORT DOCUMENT**

**CÔTÉ GOLD PROJECT
TECHNICAL SUPPORT DOCUMENT:
BUILT HERITAGE AND CULTURAL HERITAGE LANDSCAPE ASSESSMENT**

**Submitted to:
IAMGOLD Corporation
401 Bay Street, Suite 3200
Toronto, Ontario
M5H 2Y4**

**Submitted by:
AMEC Environment & Infrastructure,
a division of AMEC Americas Limited
160 Traders Blvd., Suite 110
Mississauga, Ontario
L4Z 3K7**

February 2014

TZ12023.7008

TABLE OF CONTENTS

	PAGE
GLOSSARY AND ABBREVIATIONS	ii
EXECUTIVE SUMMARY	1
1.0 INTRODUCTION AND PROJECT OVERVIEW	1-1
1.1 Heritage Assessments as part of an Environmental Assessment	1-1
1.2 Administration of Ontario Cultural Heritage Resources.....	1-2
2.0 METHODOLOGY	2-1
2.1 Study Area	2-1
2.2 Temporal Boundaries.....	2-1
2.3 Identification of Existing Heritage Resources	2-1
2.4 Selection of Effects Assessment Factors	2-2
3.0 HISTORICAL SUMMARY	3-1
3.1 History of the District of Sudbury	3-1
3.2 History of Gogama	3-1
3.3 History of Mining in the Study Area	3-1
4.0 DESCRIPTION OF IDENTIFIED CULTURAL HERITAGE RESOURCE	4-1
5.0 CONCLUSIONS	5-1
6.0 REFERENCES	6-1

LIST OF TABLES

Table 4-1: Cultural Heritage Landscapes and Built Heritage Resources in the Study Area.....	4-2
---	-----

LIST OF PHOTOGRAPHS

Photograph 4-1: The Gosselin Camp. Three Ducks Syndicate. Three Duck Lakes (Laird, 1932)	3-2
Photograph 4-2: Typical 1930's Mining Camp Log Cabin (Department of Mines, 1932).....	3-2
Photograph 4-3: Typical Winter Transportation to 1930s Mining Camps (Ice Roads of Canada, 2013).....	3-3

LIST OF APPENDICES

Appendix I: Figures
Appendix II: Photographs

GLOSSARY AND ABBREVIATIONS

Aboriginal	In the context of the Côté Gold Project, includes both First Nations and Métis people
the Agency	Canadian Environmental Assessment Agency
masl	Meters above sea level
CEAA, 2012	Canadian Environmental Assessment Act, 2012
CMT	Culturally Modified Tree
CNR	Canadian National Railway
EA	Environmental Assessment
FN	First Nation(s)
ha	Hectare(s)
km	Kilometre(s)
kV	Kilovolts(s)
MNDM	Ministry of Northern Development and Mines
MNR	Ministry of Natural Resources
MOE	Ministry of the Environment
MTCS	Ministry of Tourism, Culture and Sport
MW	Megawatt(s)
OHA	Ontario Heritage Act
tpd	Tonnes of ore per day
TSD	Technical Support Document

EXECUTIVE SUMMARY

The Côté Gold Project (the Project) is an advanced stage gold exploration project located in Chester and Neville Townships, District of Sudbury, northeastern Ontario, approximately 20 km southwest of Gogama, 130 km southwest of Timmins, and 200 km northwest of Sudbury (see Appendix I - Figure 1). IAMGOLD proposes to rehabilitate, construct and eventually operate a new open pit gold mine on the property.

The need to identify, evaluate, manage and conserve Ontario's heritage is acknowledged as a basic component of environmental assessment and municipal planning in Ontario. The analysis of cultural heritage resources in the study area addresses aboveground, person-made heritage resources 40 years of age and older. The application of this rolling 40-year principle is an accepted federal and provincial practice for the preliminary identification of cultural heritage resources that may be of heritage value or interest. However, its application does not imply that all built heritage resources or cultural heritage landscapes that are over 40 years old are not worthy of the same levels of protection or preservation.

Built heritage resources and cultural heritage landscapes have the potential to be affected by project development and its associated construction activities in many ways. The effects could include displacement (i.e. removal, demolition), or disruption, as a result of the introduction of physical, visual or atmospheric elements that are in contrast to the character or aesthetic of the cultural heritage resources or their settings.

The Ministry of Tourism, Culture and Sport (MTCS) describes heritage buildings and structures, cultural heritage landscapes and archaeological resources as cultural heritage resources. Since cultural heritage resources may be affected adversely by both public and private developments, it is incumbent upon planning and approval authorities to consider heritage resources when making planning decisions.

This report provides an assessment of the value or interest of cultural heritage resources in and adjacent to the Project area in accordance with the requirements of the *Environmental Assessment Act*, Ontario Regulation 9/06 made under the *Ontario Heritage Act* (as amended in 2005), and the guidelines presented in the Ontario MTCS's *Ontario Heritage Tool Kit*.

For the purposes of this built heritage and cultural heritage landscape assessment, AMEC undertook the following tasks:

- identification of major historical themes and activities of the study area in the Townships of Chester and Neville through historical research and a review of topographic and historic mapping;
- review of the survey of lands within and adjacent to the proposed Project site as conducted by Dr. John Pollock of Woodland Heritage Services Limited, for a report entitled Côté Gold Project, Draft Environmental Assessment Report Technical Support Document, Archaeological Resource Assessment of the IAMGOLD Côté Project area,

Chester, Yeo and Neville Townships, Sudbury District, Ontario, submitted in draft to IAMGOLD Corporation September 27, 2013. Further telephone and email communication with Dr. Pollock occurred in September and October, 2013;

- identification of cultural heritage landscapes and built heritage resources within the study area through the analysis of major historical themes and activities, historic mapping and consultation with Dr. Pollock;
- identification of proposed changes in the study area and the consequent risks to significant built heritage and cultural heritage landscapes; and
- formulation of mitigation recommendations.

Twelve cultural heritage landscapes and 19 built heritage resources were identified within the study area. Built heritage resources include structural remains and implements related to early mining activities (see Appendix I – Figure 4). Among the cultural heritage landscapes are: five remnants of Culturally Modified Trees (CMT) that served as Aboriginal and early Euro-Canadian trail markers; and seven remains of early trail systems, reflected today in open corridors through wooded areas. With the exception of movable items, such as barrels and wagon hubs, etc., all of the heritage resources listed in Table 4-1 are considered to have cultural heritage value or interest.

No mitigation measures have been recommended as the planned Project activities will not affect or threaten these features or resources. If future development is to occur in the immediate vicinity of these, measures should be taken to avoid and/or protect them. If this is not possible within the development plan, these features should be thoroughly documented prior to their disturbance or removal.

1.0 INTRODUCTION AND PROJECT OVERVIEW

The Côté Gold Project (the Project) is an advanced stage gold exploration project located in Chester and Neville Townships, District of Sudbury, northeastern Ontario, approximately 20 km southwest of Gogama, 130 km southwest of Timmins, and 200 km northwest of Sudbury (see Appendix I - Figure 1). IAMGOLD proposes to rehabilitate, construct and eventually operate a new open pit gold mine on the property.

This technical support document (TSD) has been prepared by AMEC and is one in a series of technical reports to support the environmental assessment (EA) for the Project.

The major proposed Project components are expected to include:

- open pit;
- ore processing plant;
- maintenance garage, fuel and lube facility, warehouse and administration complex;
- construction and operations accommodations complex;
- explosives manufacturing and storage facility;
- various stockpiles (overburden, mine rock and low-grade ore);
- aggregate extraction with crushing and screening plants;
- tailings management facility (TMF);
- on-site access roads and pipelines, power infrastructure and fuel storage facilities;
- potable and process water treatment facilities;
- domestic and industrial solid waste handling facilities;
- water management facilities and drainage works, including watercourse realignment; and
- transmission line and related infrastructure.

1.1 Heritage Assessments as part of an Environmental Assessment

Identifying, evaluating, managing and conserving Ontario's heritage is acknowledged as a basic component of environmental assessments (EA) and municipal planning in Ontario.

Built heritage consists of individual, person-made or modified buildings or structures including, but not limited to: residences; industrial, institutional, religious, agricultural and commercial buildings; bridges; and monuments. Examples of cultural heritage landscapes are: historic settlements, farm complexes, waterscapes, roadscape, and railways. These landscapes emphasize the interrelationship between people and the natural environment and convey information about the processes and activities that have shaped a community. Cultural heritage landscapes were not always purposely designed, but may have evolved organically. Some are

'continuing landscapes', which maintain historic land use patterns and continue to evolve, while others are 'relict landscapes', where the evolutionary process has come to an end but important landscape or built heritage resources from its historic use are still visible.

Built and cultural heritage resources and landscapes may be affected by project development and its associated construction activities by public or private enterprises, which may include displacement (i.e., removal, demolition), or disruption of the character and aesthetics of cultural heritage resources.

The analysis of built and cultural heritage resources and landscapes in the study area addresses those aboveground, person-made heritage resources 40-years of age and older, as per federally and provincially accepted practices. It should be noted that some built or cultural heritage resources or landscapes that are over 40-years old might not require protection or preservation.

The analysis throughout the study process addresses Subsection 1(c) of the Ontario *Environmental Assessment Act*, which defines "environment" as:

"...cultural conditions that influence the life of humans or a community"; as well as, "any building, structure, machine or other device or thing made by humans".

1.2 Administration of Ontario Cultural Heritage Resources

The MTCS describes heritage buildings and structures, cultural heritage landscapes and archaeological resources as cultural heritage resources, and is responsible for the administration of the *Ontario Heritage Act* (OHA). The OHA provides the framework for provincial and municipal responsibilities and powers in the conservation of cultural heritage resources. The OHA gives MTCS the responsibility for the conservation, protection and preservation of Ontario's culture heritage resources. Section 2 of the OHA charges the Minister with the responsibility to:

"...determine policies, priorities and programs for the conservation, protection and preservation of the heritage of Ontario".

2.0 METHODOLOGY

2.1 Study Area

The study area is defined as a 30 km buffer around the Project site footprint, and covers the same area studied to identify archaeological resources. The 30 km buffer is anticipated to be an appropriate spatial boundary for quantifying built heritage resources and cultural heritage landscapes, and assessing potential Project-specific effects.

The study area also includes a 2 km buffer on either side of the proposed transmission line alignment alternatives.

2.2 Temporal Boundaries

The temporal boundaries of the EA for effect's assessment will span all phases of the Project:

- construction;
- operations;
- closure; and
- post-closure.

2.3 Identification of Existing Heritage Resources

The study area was surveyed when weather and lighting conditions permitted good visibility of land features. A GPS was used according to the requirements (set out in section 2.1.5 of the Standards and Guidelines for Consultant Archaeologists) to record the locations of diagnostic artefacts and all fixed reference landmarks. All field activities and conditions were mapped and photo-documented (see Appendix II).

Built heritage resources and cultural heritage landscapes identified during the survey were compared to local listings and the OHA to determine if these have previous cultural heritage designations.

In order to assist with the evaluation of cultural heritage resources, the province also enacted Ontario Regulation (O. Reg.) 9/06 - Criteria for Determining Cultural Heritage Value or Interest made under the OHA. The regulation sets out specific criteria as a useful tool when assessing the cultural heritage value and interest of properties in three categories, including: historical or associative value; design or physical value; and contextual value. It further divides these into the following sub-categories:

- Design or Physical Value,
 - is a rare, unique, representative or early example of a style, type, expression, material or construction method,
 - displays a high degree of craftsmanship or artistic merit, or
 - demonstrates a high degree of technical or scientific achievement;

- Historical or Associative Value,
 - has direct associations with a theme, event, belief, person, activity, organization or institution that is significant to a community,
 - yields, or has the potential to yield, information that contributes to an understanding of a community or culture, or
 - demonstrates or reflects the work or ideas of an architect, artist, builder, designer or theorist who is significant to a community; and
- Contextual Value,
 - is important in defining, maintaining or supporting the character of an area,
 - is physically, functionally, visually or historically linked to its surroundings, or
 - is a landmark.

Under O. Reg. 9/06, should the property satisfy at least one of the above criteria, it can be considered eligible for designation under Part IV of the OHA, whether deemed of high or low value or interest.

2.4 Selection of Effects Assessment Factors

The effects assessment factors selected for the built heritage resources and cultural heritage landscapes are presented below:

- destruction of any, or part of any, built heritage resources, cultural heritage landscapes, heritage attributes or features;
- alteration that is not sympathetic to, or is incompatible with, the historic fabric and appearance of cultural heritage resources;
- shadows created that alter the appearance of a built heritage resource, cultural heritage landscape, or heritage attribute, or that change the viability of a natural feature or plantings, such as a garden;
- isolation of a built heritage resource or heritage attribute from its surrounding environment, context or a significant contextual relationship;
- direct or indirect obstruction of significant views or vistas within, from, or of, built heritage resources or cultural heritage landscapes; and
- a change in land use such as rezoning a battlefield from open space to residential use, allowing new development or site alteration to fill in the formerly open spaces.

The rationale for selection of these factors is presented below:

- municipal, provincial and federal registers of properties of cultural heritage value, non-governmental heritage organizations, municipal heritage committees;
- cultural heritage evaluation report, and heritage impact assessment; and

- the MTCS's Standards and Guidelines for the Conservation of Provincial Heritage Properties (2011).

3.0 HISTORICAL SUMMARY

3.1 History of the District of Sudbury

Starting in 1858, districts were created in Northern Ontario for the delivery of judicial and provincial government services (Archives of Ontario, 2013). As populations grew, new districts were created and boundaries changed. The Sudbury District, in Northeastern Ontario was created in 1894 from townships of eastern Algoma District and west Nipissing District. The overwhelming majority of the district (about 92%) is unincorporated and part of the Unorganized North Sudbury District. With the exception of Chapleau, all of the district's incorporated municipalities are found in the area immediately surrounding the City of Greater Sudbury to the west, east and south. North of the Greater Sudbury area, the district is sparsely populated; between Sudbury and Chapleau, only unincorporated settlements, ghost towns and small First Nations reserves are found.

3.2 History of Gogama

Gogama is the closest community to the study area. Gogama is an Ojibway word meaning "jumping fish", likely in reference to the many fish that abound the waters of Lake Miniskawa. A Hudson's Bay Company trading post was established in the area in the early 18th century. The Canadian Northern Railway (now the CNR) was extended through this area between 1911 and 1914. Gogama was first settled in 1917 by Arthur L'Abbé. The post office was opened shortly after in 1919. Gogama has relied heavily on the forestry industry although tourism is starting to benefit the hamlet as well (Gogama, 2013).

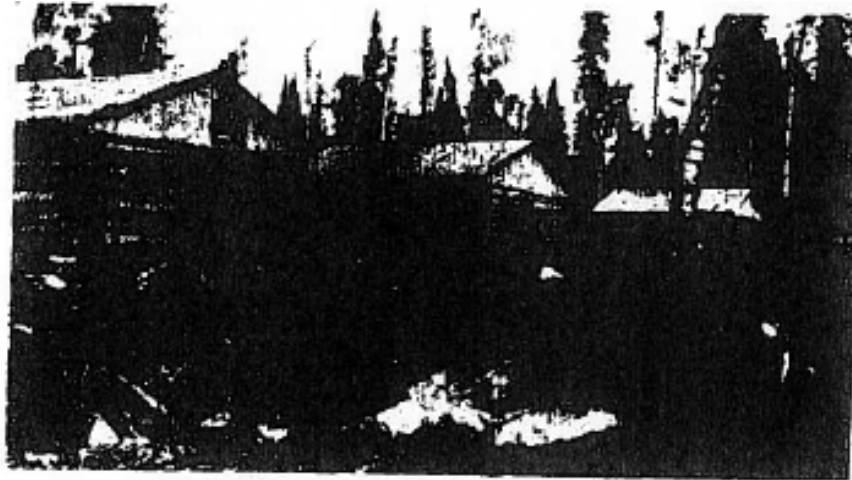
3.3 History of Mining in the Study Area

In 1932, H. C. Laird wrote in the *Geology of the Three Ducks Area* for the Ontario Department of Mines that:

In the summer of 1930, a spectacular discovery of native gold on the east shore of Three Ducks Lake, Chester Township, District of Sudbury, aroused new interest in an area that had seen prospecting in a quiet way at different times over a period of thirty years. This discovery, followed by others on the same lakes, caused an influx of prospectors during the summer of 1931, with the result that about 250 claims were staked along a favourable belt of rocks between Mesomikenda Lake and Schist Lake. The principal gold discoveries occur(red) in Chester Township which lies about 13 miles in a straight line southwest of Gogama, on the Canadian National Railway, and about 80 miles northwest of Sudbury (Laird, 1932).

Early prospecting near the study area commenced around 1900 with the first claim staked in 1908 by J.A. Shannon and Charles Côté. In 1930 Alfred Gosselin found a large gold showing on the eastern shore of Three Duck Lakes (see Appendix I - Figure 4). This led to further activity through the entire area. In the *Geology of the Three Ducks Area*, Laird mentions Gosselin's south mining camp at Mesomikenda (see Photograph 4-1; Laird, 1932).

Photograph 4-1: The Gosselin Camp. Three Ducks Syndicate. Three Duck Lakes (Laird, 1932)



Mining camps from the early 1900's were crudely constructed of logs without thought for long-term habitation (see Photograph 4-2). Accordingly, early mining sites provide only occasional ruins.

Photograph 4-2: Typical 1930's Mining Camp Log Cabin (Department of Mines, 1932)



Claims were usually reached by canoe through the lakes, rivers and streams, with overland travel by means of portage routes already established by local First Nation groups in the summer and by "winter roads" in the winter. Winter roads were temporary roads carved out of ice and snow (see Photograph 4-3). These roads were generally built in areas where

construction of year round roads was expensive due to the many river crossings and the presence of boggy muskeg land. When frozen in winter these roads were more economical than full-year roads.

Photograph 4-3: Typical Winter Transportation to 1930s Mining Camps (Ice Roads of Canada, 2013)



4.0 DESCRIPTION OF IDENTIFIED CULTURAL HERITAGE RESOURCE

Dr. John Pollock undertook a survey of the study area as part of an Archaeological Resource Assessment of the IAMGOLD Côté Gold Project in 2012. While doing the archaeological survey of the study area he also identified areas where ruins of early 1930's prospecting or mining camps or habitations were present. Due to the initial Euro-Canadian settlement, these habitations only remain as ruins. Adhering to the MTCS Standards and Guidelines for Consultant Archaeologists, Dr. Pollock identified not only archaeological resources but also built heritage resources and cultural heritage landscapes.

This assessment has identified and examined 12 cultural heritage landscapes and 19 built heritage resources. All 31 identified resources are briefly described and their value or interest as per O. Reg. 9/06, potential impact and mitigation suggestions are referenced in Table 4-1. Photographs of all 31 identified resources are documented in Appendix II.

Consultation with the Planning Department for the Greater City of Sudbury confirmed that they only deal with the City of Greater Sudbury and that the Province administers that area through the MTCS. Upon contacting representatives of the MTCS and the Gogama Heritage Museum, it was discovered that none of the identified built or cultural heritage resources or landscapes have been designated under Part IV of the OHA. In addition, there are no road bridges listed in the *Ontario Heritage Bridge Guideline* and no identified *Ontario Heritage Trust* easement properties or federally recognized properties within or adjacent to the study area.

Table 4-1: Cultural Heritage Landscapes and Built Heritage Resources in the Study Area

Photo	Resource Category	Location	Brief Description	Value or Interest	Potential Effects	Mitigation Recommended
1	CHL	Trail Marker	The remnant of a square stump that served as a marker of what had been a portage route	High	None	None
2	CHL	Trail Marker	The remnant of a Culturally Modified Tree with a blaze marking at what had been a portage route	High	None	None
3	CHL	Portage Route along Three Duck Lakes	A landing location for what had been a portage route	High	None	None
4	CHL	Portage Route from the middle Three Duck Lakes to the pond to the east	A clearing in a wooded area of what had been a portage route	High	None	None
5	CHL	Portage Route	A clearing in a wooded area of what had been a portage route	High	None	None
6	CHL	Portage Route	A clearing in a wooded area of what had been a portage route	High	None	None
7	CHL	Portage Route	An approach to a clearing at the edge of a lake that marked what had been a portage route	High	None	None
8	CHL	Portage Route	The remnant of a Culturally Modified Tree with a blaze marking at what had been a portage route	High	None	None

Photo	Resource Category	Location	Brief Description	Value or Interest	Potential Effects	Mitigation Recommended
9	CHL	Portage Route	An approach to a clearing at the edge of a lake that marked what had been a portage route	High	None	None
10	CHL	Portage Route from Bagsverd to Three Duck Lakes	The remnant of a Culturally Modified Tree with a blaze marking at what had been a portage route	High	None	None
11	CHL	Portage Route from Bagsverd to Three Duck Lakes	The remnant of a Culturally Modified Tree with a blaze marking at what had been a portage route	High	None	None
12	CHL	Portage Route	A clearing in a wooded area of what had been a portage route	High	None	None
13	BH	Shannon Cabin Site	The remnants of a barrel stove	Low	None	None
14	BH	Shannon Cabin Site	The remnants of a cross cut saw	Low	None	None
15	BH	Clam Lake, Gold Mining Company Site	Cabin ruins	High	None	None
16	BH	Clam Lake, Gold Mining Company Site	Cabin ruins	High	None	None
17	BH	Headframe Point site	Ruins of the hoist room foundation	High	None	None
18	BH	Young-Shannon Mine, near Côté Lake	Ruins of the former mill site	High	None	None
19	BH	Young-Shannon Mine, near Côté Lake	Ruins of the corner of the mill	High	None	None

Photo	Resource Category	Location	Brief Description	Value or Interest	Potential Effects	Mitigation Recommended
20	BH	Young-Shannon Mine, near Côte Lake	Remnants of part of a steam engine that once powered the mill	Low	None	None
21	BH	Gosselin Mining Site	Ruins of a row boat	Low	None	None
22	BH	Gosselin Mining Site	Remnants of a wagon hub	Low	None	None
23	BH	Gosselin Mining Site	A large rusted barrel	Low	None	None
24	BH	Gosselin Mining Site	The cookery ruins	High	None	None
25	BH	Gosselin Mining Site	The cookery ruins	High	None	None
26	BH	Gosselin Mining Site	The bunkhouse ruins	High	None	None
27	BH	Gosselin Mining Site	The wall ruins of the bunkhouse	High	None	None
28	BH	Gosselin Mining Site	The remains of the bunkhouse door	Low	None	None
29	BH	Gosselin Mining Site	The remains of a window	Low	None	None
30	BH	Gosselin Mining Site	Ruins of the privy/ outhouse	High	None	None
31	BH	Cryderman Site	Ruins of a small building	High	None	None

*CHL: Cultural Heritage Landscape

**BH: Built Heritage

5.0 CONCLUSIONS

Twelve cultural heritage landscapes and 19 built heritage resources were identified within the study area.

Among the cultural heritage landscapes are: five remnants of Culturally Modified Trees (CMT) that served as Aboriginal and early Euro-Canadian trail markers; and seven remains of early trail systems or portage routes, reflected today in open corridors through wooded areas. Built heritage resources include structural remains and implements related to early mining activities (see Appendix I – Figure 4). Items identified included old appliances, cabins and other ruins, such as a former mill, housing and a steam engine.

With the exception of movable items, such as barrels and wagon hubs, all of the heritage resources listed in Table 4-1 are considered to have a high built or cultural heritage value or interest.

No mitigation measures have been recommended for the identified built heritage resources and cultural heritage landscapes, as the planned Project activities will not affect or threaten these features or resources. The identified features or resources are near proposed Project components, but outside of their immediate footprints and considered to be at an acceptable distance from these to not be affected (see Figure 4). If future development is to occur in the immediate vicinity of these, measures can be taken to avoid and/or protect them. If this is not possible within development plans, these features should be thoroughly documented prior to their disturbance or removal, as per applicable regulations and guidelines from the MTCS and under the OHA.

6.0 REFERENCES

Agriculture and Agri-Good Canada. 2011. Map of Arable Land in Ontario. Accessed September 26, 2013 from: http://sis.agr.gc.ca/cansis/publications/maps/cli/1m/agri/cli1m_agrontario.jpg

Canadian Chamber of Commerce. 2013. Mining Capital: How Canada has transformed its resource endowment into a global competitive advantage. Toronto: Canadian Chamber of Commerce.

Department of Mines. 1932. Bulletin No. 83, Twenty-Five Years of Ontario's Mining History. Toronto: Herbert H. Ball, Publisher.

Gogama, Ontario, Canada. Accessed October 2, 2013 from <http://www.gogama.ca/>

Human Resource and Skills Development Canada (HRSDC). 2013. Ontario Labour Market Bulletin, Annual Edition 2012. Ottawa: HRSCD. Accessed September 24, 2013 from: <http://www.hrwdc.gc.ca/eng/jobs/lmi/publications/bulletins/on/annual2012.shtml>

Ice Roads of Canada. Accessed October 3, 2013 from <http://www.thedieselgypsy.com/Ice%20Roads-3B-Denison.htm>

Laird, H.C. 1932. 1932 Geology of the Three Ducks Lakes Area. Ontario Department of Mines. Annual Report 41, Vol.XLI., pt.III.

Ontario Ministry of Tourism, Culture and Sport. 2006. *Ontario Heritage Toolkit* (http://www.mtc.gov.on.ca/en/heritage/heritage_toolkit.shtml: Heritage Resources in the Land Use Planning Process), Ontario Ministry of Tourism, Culture and Sport, Toronto.

Ontario Heritage Act, R.S.O. 1990, c.O.18 (e-laws publication: http://www.e-laws.gov.on.ca/html/statutes/english/elaws_statutes_90o18_e.htm)

Ontario Regulation 9/06 made under the *Ontario Heritage Act, R.S.O. 1990, c.O.18, Criteria for Determining Cultural Heritage Value or Interest, January 2006.*

Parks Canada. 2010. *Standards and Guidelines for the Conservation of Historic Places in Canada*. Second Edition, Ottawa.

Contacts

Frank Dieterman, Manager, Heritage Projects Infrastructure Ontario, October 1, 2013.

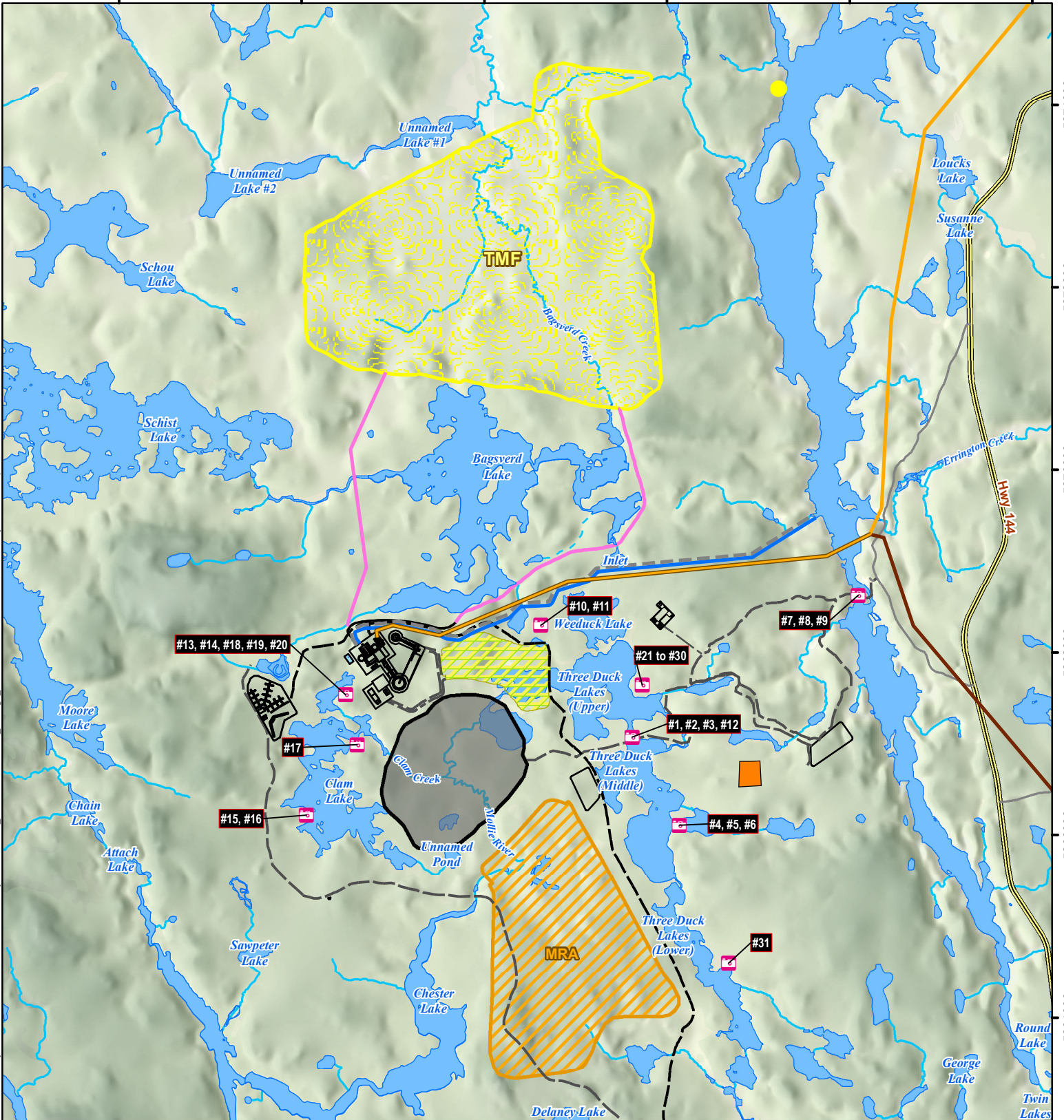
Amy Didrikson, Heritage Planner, Ministry of Tourism, Culture and Sport, September 27, 2013.

Kris Longston, Senior Planner, Community and Strategic Planning, City of Greater Sudbury.
September 24, 2013.

John Pollock, Woodland Heritage Services Limited, September 26, 27, 30 and October 10,
2013.

Gerry Talbot, Gogama Heritage Museum, October 2, 2013.

**Appendix I
Figures**



Path: P:\EWP\Projects\2012\TC121522 IAMGOLD.Cote Project\GIS\EA\EA_DRAFT\TMXD\Cultural_heritage_resource2.mxd, Author: SM, modified by sandra.marquez, 11 November 2013

LEGEND		
	Photo Locations (Labelled with ID number)	
	Existing Intermittent Watercourse	
	Existing Permanent Watercourse	
	Existing Waterbodies	
	Highway	
	Local Road	
	Wooded Area	
	Open Pit	
	Potential Discharge Location	
	Facilities	
	Main Access Road	
	Access Road	
	Cross-Country 230 kV Transmission Line Alignment	
	Shining Tree 230 kV Transmission Line Alignment	
	Tailings and Reclaim Pipeline	
	Fresh Water	

NOTES:
 - Ontario base data extracted from Land Information Ontario (MNR)
 - TMF and subwatershed provided by Golder Associates.
 - Watercourse realignment and proposed lake area provided by Calder Engineering.
 - Surface infrastructure, open pit, landfill, MRA and transmission lines provided by IAMGOLD.
 - Mesomikenda Lake is preferred discharge option, but others are being investigated.



CÔTÉ GOLD PROJECT

Photograph Locations of Cultural Heritage Resource

Datum: NAD83
 Projection: UTM Zone 17N

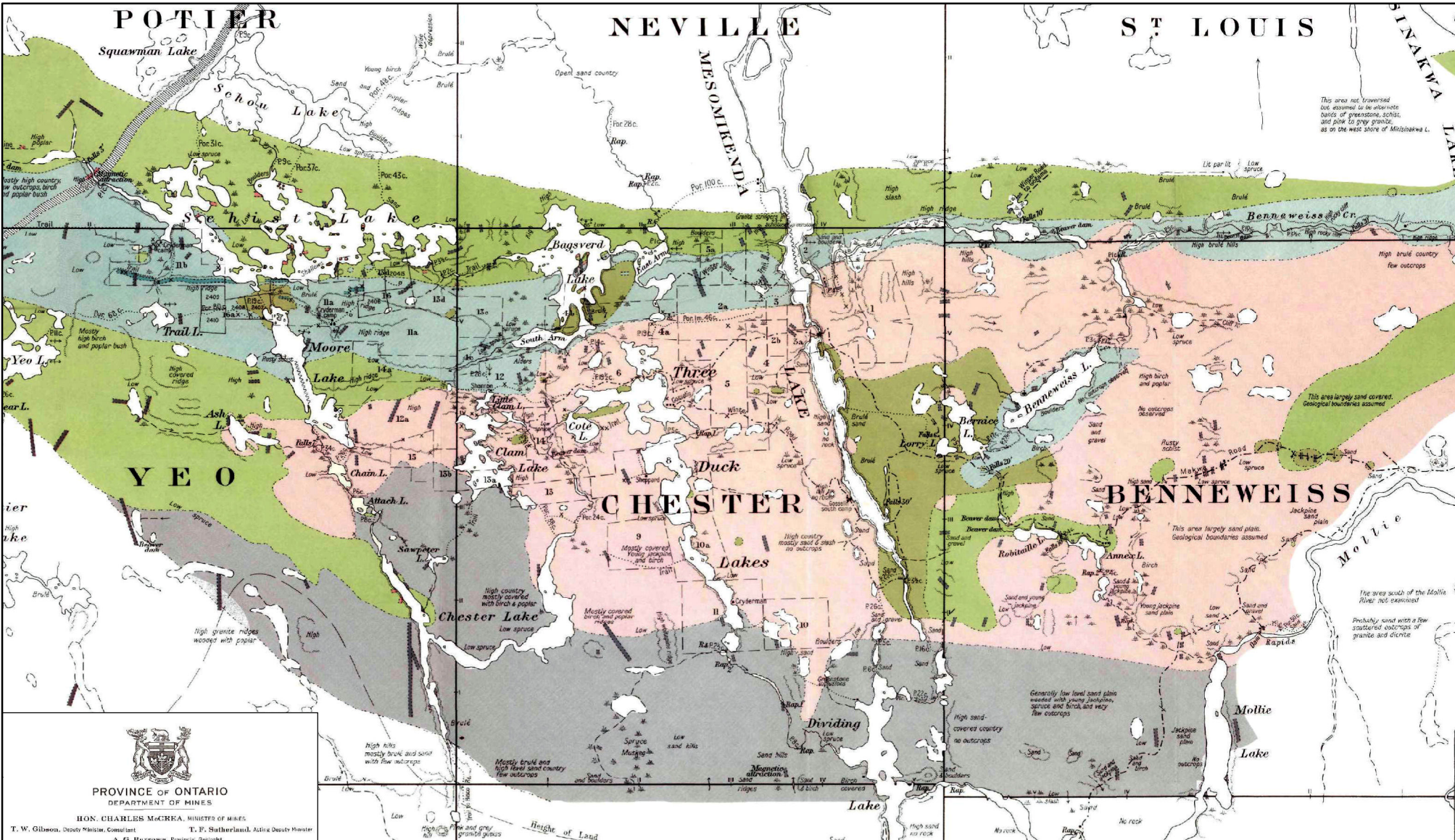


PROJECT N°: TC121522
 SCALE: 1:57,000

FIGURE: 4
 DATE: December 2013



Path: P:\EM\Projects\2012\TC121522\IAMGOLD Cote Project\GIS\ENEA_DRAFT\MXD\1932mining_map.mxd, Author: ken.brookes, modified by sandra.marquez, 11 November 2013



PROVINCE OF ONTARIO
DEPARTMENT OF MINES

HON. CHARLES McCREA, MINISTER OF MINES
T. W. Gibson, Deputy Minister, Consultant T. F. Sutherland, Acting Deputy Minister
A. H. Harcourt, Provincial Geologist

LEGEND

PRE-CAMBRIAN	Pre-Algonian (Haileyburian?)	Symbols
Onvra diabases.	Diabase, quartz-diorite.	Strike and dip of schistosity.
Dabase dikes.	Iron formation.	Strike of vertical schistosity.
Algonian	Sediments: schistose conglomerate, gneissic arkose, quartzite, argillite, sericolite, mica-hornblende schist.	Geological boundary, defined.
Younger granite with diorite, granodiorite, alkalic feldspar, lamprophyre dikes, basic inclusions, gold-bearing quartz veins.	Keewatin	Geological boundary, assumed.
Older granite: pink in grey varieties with anorthite, gneissic and bi-partite shales.	Volcanics: schistose lavae basic to intermediate in composition, pillow lava, pyroclastics.	Glacial striae.
Granite-diorite complex, diorite enclaves. The diorite may be pre-Algonian. * This may include some dikes of Keewatin age, in age.		Fault.

Key Groups of Claims

HM.
Muskeg.
Kettle lake.
Trail or portage.
Wagon or winter road.
Cabin.
Prospect showing.
Old prospect shaft.

NOTES:

SOURCES OF INFORMATION

Township outlines from plans of the Ontario Department of Surveys.

Woman River Sheet, Map No. 2334 of the Geological Survey of Canada, by R. C. Emmons and E. Thomson, 1929, and also some unpublished map material.

Geology and additional topography by R. G. Laird.

Drawn for photo-lithography by J. F. Jameson.

Datum: NAD83
Projection: UTM Zone 17N

IAMGOLD CORPORATION **amec**

CÔTÉ GOLD PROJECT

1932 Mining Map of the Three Duck Lakes Area

PROJECT N°: TC121522 FIGURE: 3

SCALE: Not to scale DATE: December 2013

426000

428000

430000

432000

434000

436000

5274000

5272000

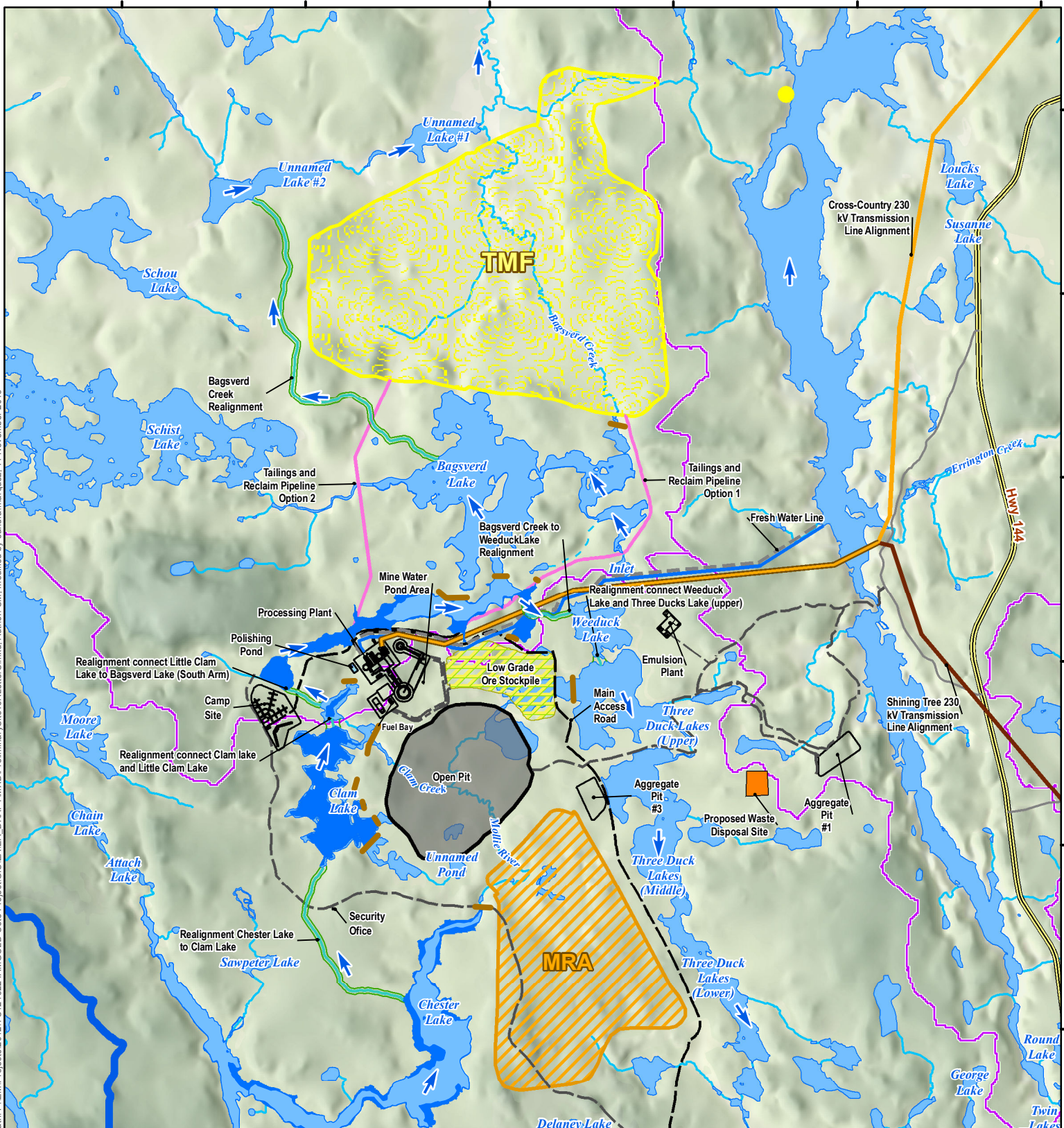
5270000

5268000

5266000

5264000

Path: P:\EWP\Projects\2012\TC121522 IAMGOLD Cole Project\GIS\EA\EA_DRAFT\TMXD\Preliminary\SiteToR\LetterS.mxd, Author: SM, modified by sandra.marquez, 11 November 2013



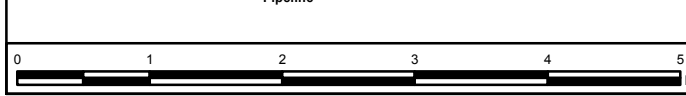
LEGEND	
	Existing Intermittent Watercourse
	Existing Permanent Watercourse
	Existing Waterbodies
	Highway
	Local Road
	Subwatershed Boundary
	Wooded Area
	Open Pit
	Potential Discharge Location
	Facilities
	Dam
	Main Access Road
	Access Road
	Cross-Country 230 kV Transmission Line Alignment
	Shining Tree 230 kV Transmission Line Alignment
	Tailings and Reclaim Pipeline
	Fresh Water
	Water Realignment
	Proposed Water Flow Direction
	Proposed Lake Area
	Polishing Pond
	Low Grade Ore Stockpile
	Proposed Mine Rock Area (MRA)
	Proposed Tailings Management Facility (TMF)
	Proposed Landfill

NOTES:
 Ontario base data extracted from Land Information Ontario (MNR) - TMF and subwatershed provided by Golder Associates.
 -Watercourse realignment and proposed lake area provided by Calder Engineering.
 -Surface infrastructure, open pit, landfill, MRA and transmission lines provided by IAMGOLD.
 -Mesomikenda Lake is preferred discharge option, but others are being investigated.



CÔTÉ GOLD PROJECT

Preliminary Site Plan

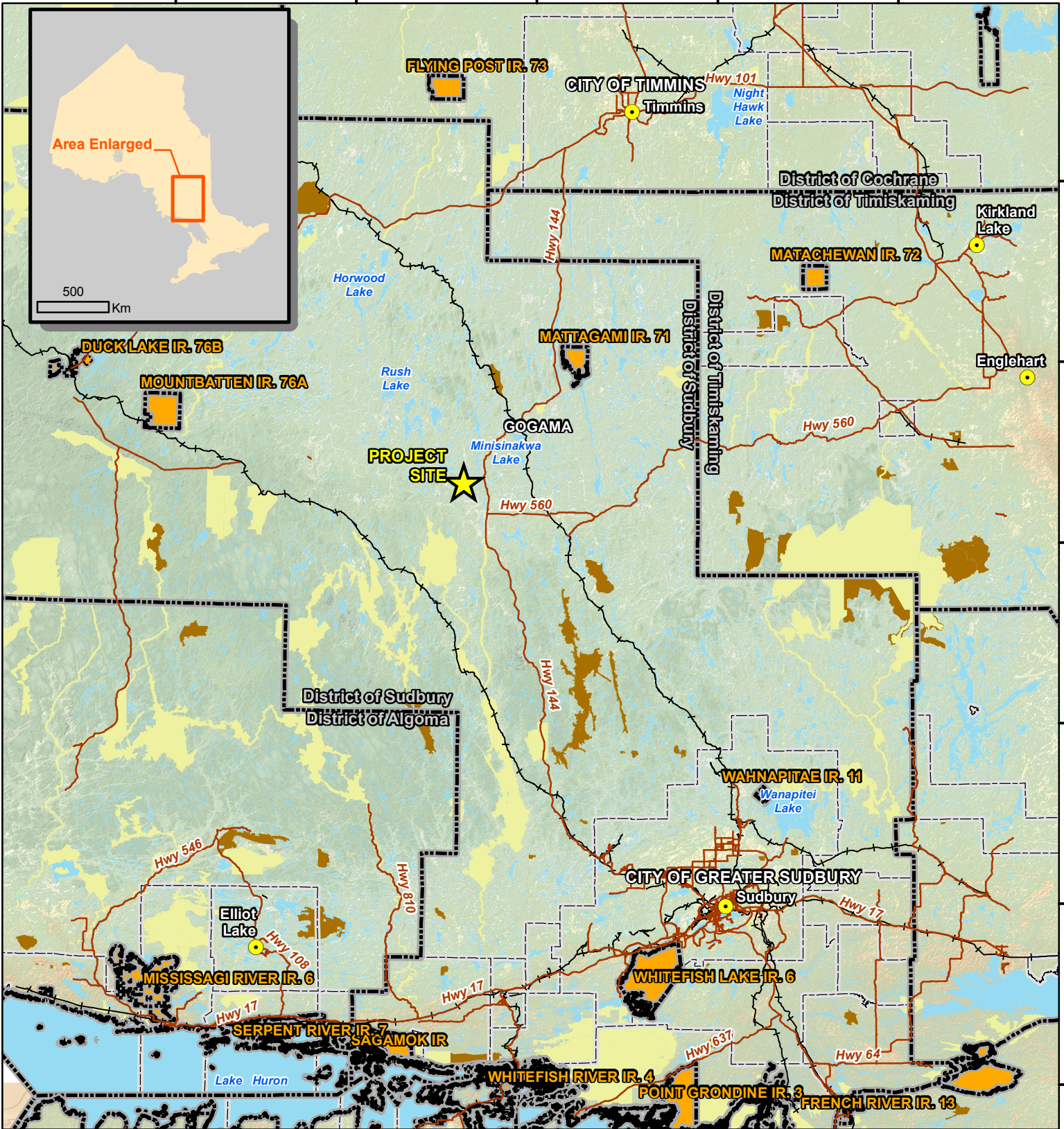


Datum: NAD83
 Projection: UTM Zone 17N

PROJECT N°: TC121522
 SCALE: 1:57,000

FIGURE: 2
 DATE: December 2013

350000 400000 450000 500000 550000



5350000
5300000
5250000
5200000
5150000
5100000

Path: P:\EM\Projects\2012\TC121522_IAMGOLD\Cote Project\GIS\EA\EA_DRAFT\MXD\ProjectLocation.mxd, Author: ken.brookes, modified by sandra.marquez, 01 November 2013

LEGEND

- Project Site Location
- Regional Communities
- Major Roads
- Railway
- Lower Tier Municipality Boundary
- Upper Tier Municipality Boundary
- First Nation Reserve
- Conservation Reserve (Regulated)
- Provincial Park
- Waterbody / Large Watercourse
- Wooded Area

NOTES:
- All base data on this map was extracted from Land Information Ontario, MNDM, OBM Ontario Digital Geospatial Database and Ontario Road Network Database.



CÔTÉ GOLD PROJECT

Project Location

Datum: NAD83
Projection: UTM Zone 17N

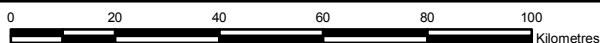


PROJECT N^o: TC121522

FIGURE: 1

SCALE: 1:1,450,000

DATE: December 2013






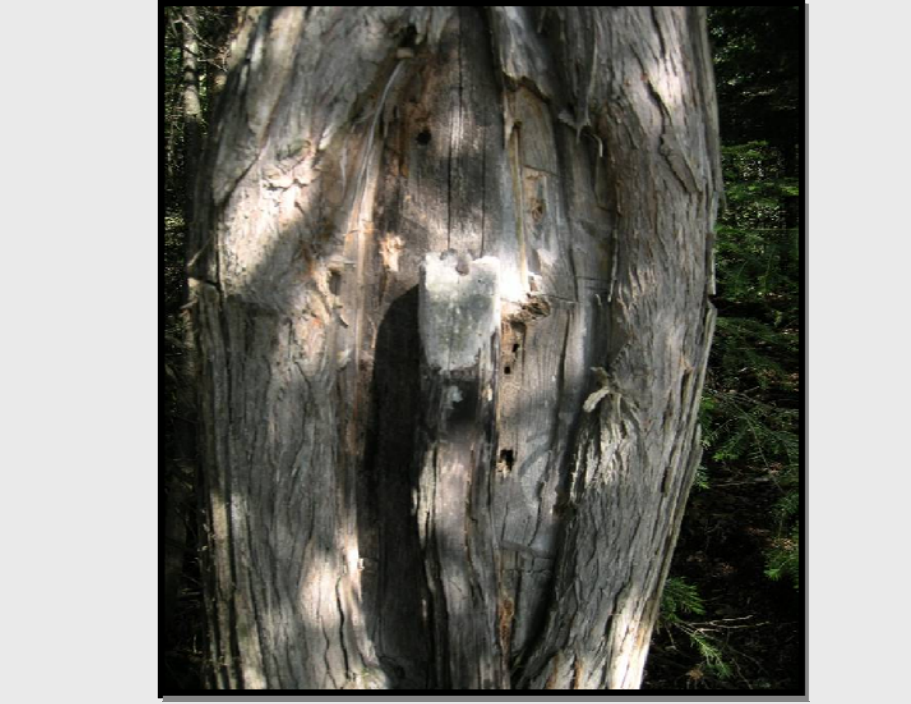
Appendix II Photographs

APPENDIX II - PHOTOGRAPHIC RECORD

PROJECT NO. TZ12023
 PROJECT Côté Gold Project, IAMGOLD
 LOCATION Chester, Yeo and Neville Townships

ENCLOSURE 1

	PHOTOGRAPH	1	
	<table border="1"> <thead> <tr> <th data-bbox="1122 489 1463 541">Description</th> </tr> </thead> <tbody> <tr> <td data-bbox="1122 541 1463 1020"> Cultural Heritage Landscape. Photograph 447 of the remnant of a square stump that served as a marker of what had been a portage route, located at the mouth of the Upper Three Duck Lakes and the Middle Three Duck Lakes. </td> </tr> </tbody> </table>		Description
Description			
Cultural Heritage Landscape. Photograph 447 of the remnant of a square stump that served as a marker of what had been a portage route, located at the mouth of the Upper Three Duck Lakes and the Middle Three Duck Lakes.			


	PHOTOGRAPH	2	
	<table border="1"> <thead> <tr> <th data-bbox="1122 1308 1463 1360">Description</th> </tr> </thead> <tbody> <tr> <td data-bbox="1122 1360 1463 1839"> Cultural Heritage Landscape. Photograph 444 of the remnant of a Culturally Modified Tree with a blaze marking at what had been a portage route, located at the mouth of the Upper Three Duck Lakes and the Middle Three Duck Lakes. </td> </tr> </tbody> </table>		Description
Description			
Cultural Heritage Landscape. Photograph 444 of the remnant of a Culturally Modified Tree with a blaze marking at what had been a portage route, located at the mouth of the Upper Three Duck Lakes and the Middle Three Duck Lakes.			

APPENDIX II - PHOTOGRAPHIC RECORD

PROJECT NO. TZ12023
 PROJECT Côté Gold Project, IAMGOLD
 LOCATION Chester, Yeo and Neville Townships

ENCLOSURE 2

	PHOTOGRAPH	3
	Description	
<p>Cultural Heritage Landscape. Photograph 445 of the old portage landing along the Three Duck Lakes.</p>		

	PHOTOGRAPH	4
	Description	
<p>Cultural Heritage Landscape. Photograph 694 of a clearing in a wooded area of what had been a portage route, from the middle Three Duck Lakes to the pond to the east.</p>		


APPENDIX II - PHOTOGRAPHIC RECORD

PROJECT NO. TZ12023

PROJECT Côté Gold Project, IAMGOLD

LOCATION Chester, Yeo and Neville Townships

ENCLOSURE 3


	<table border="1"> <tr> <td>PHOTOGRAPH</td> <td>5</td> </tr> </table>	PHOTOGRAPH	5
PHOTOGRAPH	5		
<table border="1"> <tr> <td>Description</td> </tr> </table>		Description	
Description			
<p>Cultural Heritage Landscape. Photograph 686 of the portage, located on the middle Three Duck Lakes going to a pond to the east.</p>			


	<table border="1"> <tr> <td>PHOTOGRAPH</td> <td>6</td> </tr> </table>	PHOTOGRAPH	6
PHOTOGRAPH	6		
<table border="1"> <tr> <td>Description</td> </tr> </table>		Description	
Description			
<p>Cultural Heritage Landscape. Photograph 709 of the portage located on the middle Three Duck Lakes going to a pond to the east.</p>			

APPENDIX II - PHOTOGRAPHIC RECORD

PROJECT NO. TZ12023
 PROJECT Côté Gold Project, IAMGOLD
 LOCATION Chester, Yeo and Neville Townships

ENCLOSURE 4


	PHOTOGRAPH	7
	Description	
<p>Cultural Heritage Landscape. Photograph 529 of an approach to a clearing at the edge of a lake that marked what had been a portage route, located along Mesomikenda Lake.</p>		


	PHOTOGRAPH	8
	Description	
<p>Cultural Heritage Landscape. Photograph 532 of the remnant of a Culturally Modified Tree with a blaze marking at what had been a portage route, located along Mesomikenda Lake.</p>		

APPENDIX II - PHOTOGRAPHIC RECORD

PROJECT NO. TZ12023
 PROJECT Côté Gold Project, IAMGOLD
 LOCATION Chester, Yeo and Neville Townships

ENCLOSURE 5

	PHOTOGRAPH	9
	Description Cultural Heritage Landscape. Photograph 533 of the landing, located along Mesomikenda Lake.	

	PHOTOGRAPH	10
	Description Cultural Heritage Landscape. Photograph 567 of the remnant of a Culturally Modified Tree with a blaze marking at what had been a portage route at the Bagsverd Lake to Three Duck Lakes portage.	

APPENDIX II - PHOTOGRAPHIC RECORD

PROJECT NO. TZ12023
 PROJECT Côté Gold Project, IAMGOLD
 LOCATION Chester, Yeo and Neville Townships

ENCLOSURE 6



PHOTOGRAPH

11

Description

Cultural Heritage Landscape. Photograph 569 of the remnant of a Culturally Modified Tree with a blaze marking at what had been a portage route at the Bagsverd to Three Duck Lakes portage.



PHOTOGRAPH

12

Description


Cultural Heritage Landscape. Photograph 572 of a clearing in a wooded area of what had been a portage route, located along the Three Duck Lakes.

APPENDIX II - PHOTOGRAPHIC RECORD

PROJECT NO. TZ12023
 PROJECT Côté Gold Project, IAMGOLD
 LOCATION Chester, Yeo and Neville Townships

ENCLOSURE 7


	<table border="1"> <tr> <td>PHOTOGRAPH</td> <td>13</td> </tr> </table>	PHOTOGRAPH	13		
PHOTOGRAPH	13				
<table border="1"> <thead> <tr> <th colspan="2">Description</th> </tr> </thead> <tbody> <tr> <td colspan="2"> <p>Built Heritage. Photograph 814 of the remnants of a barrel stove at the Shannon cabin.</p> </td> </tr> </tbody> </table>		Description		<p>Built Heritage. Photograph 814 of the remnants of a barrel stove at the Shannon cabin.</p>	
Description					
<p>Built Heritage. Photograph 814 of the remnants of a barrel stove at the Shannon cabin.</p>					

	<table border="1"> <tr> <td>PHOTOGRAPH</td> <td>14</td> </tr> </table>	PHOTOGRAPH	14		
PHOTOGRAPH	14				
<table border="1"> <thead> <tr> <th colspan="2">Description</th> </tr> </thead> <tbody> <tr> <td colspan="2"> <p>Built Heritage. Photograph 823 of the remnants of a cross cut saw at the Shannon cabin.</p> </td> </tr> </tbody> </table>		Description		<p>Built Heritage. Photograph 823 of the remnants of a cross cut saw at the Shannon cabin.</p>	
Description					
<p>Built Heritage. Photograph 823 of the remnants of a cross cut saw at the Shannon cabin.</p>					

APPENDIX II - PHOTOGRAPHIC RECORD

PROJECT NO. TZ12023
 PROJECT Côté Gold Project, IAMGOLD
 LOCATION Chester, Yeo and Neville Townships

ENCLOSURE 8


	PHOTOGRAPH	15
	Description	
<p>Built Heritage. Photograph 796 of the cabin ruins at Clam Lake Gold Mining Company site.</p>		

	PHOTOGRAPH	16
	Description	
<p>Built Heritage. Photograph 798 of the cabin ruins at Clam Lake Gold Mining Company site.</p>		

APPENDIX II - PHOTOGRAPHIC RECORD

PROJECT NO. TZ12023
 PROJECT Côté Gold Project, IAMGOLD
 LOCATION Chester, Yeo and Neville Townships

ENCLOSURE 9

	<table border="1"> <tr> <td data-bbox="1117 399 1388 457">PHOTOGRAPH</td> <td data-bbox="1388 399 1461 457">17</td> </tr> </table>	PHOTOGRAPH	17
PHOTOGRAPH	17		
<table border="1"> <tr> <td data-bbox="1117 487 1461 541">Description</td> </tr> <tr> <td data-bbox="1117 541 1461 1018"> Built Heritage. Photograph 375 of the ruins of the hoist room foundation remains at Headframe Point site. </td> </tr> </table>		Description	Built Heritage. Photograph 375 of the ruins of the hoist room foundation remains at Headframe Point site.
Description			
Built Heritage. Photograph 375 of the ruins of the hoist room foundation remains at Headframe Point site.			

	<table border="1"> <tr> <td data-bbox="1117 1209 1388 1268">PHOTOGRAPH</td> <td data-bbox="1388 1209 1461 1268">18</td> </tr> </table>	PHOTOGRAPH	18
PHOTOGRAPH	18		
<table border="1"> <tr> <td data-bbox="1117 1297 1461 1352">Description</td> </tr> <tr> <td data-bbox="1117 1352 1461 1833"> Built Heritage. Photograph 017. Ruins of former mill site at the Young-Shannon Mine, near the Côté Lake. </td> </tr> </table>		Description	Built Heritage. Photograph 017. Ruins of former mill site at the Young-Shannon Mine, near the Côté Lake.
Description			
Built Heritage. Photograph 017. Ruins of former mill site at the Young-Shannon Mine, near the Côté Lake.			

APPENDIX II - PHOTOGRAPHIC RECORD

PROJECT NO. TZ12023
 PROJECT Côté Gold Project, IAMGOLD
 LOCATION Chester, Yeo and Neville Townships

ENCLOSURE 10

	<table border="1" style="width: 100%; border-collapse: collapse;"> <tr> <td style="width: 70%;">PHOTOGRAPH</td> <td style="width: 30%;">19</td> </tr> <tr> <td colspan="2" style="text-align: center;">Description</td> </tr> <tr> <td colspan="2"> <p>Built Heritage. Photograph 063 of the corner of the ruins of the Young-Shannon mill, near the Côté Lake.</p> </td> </tr> </table>	PHOTOGRAPH	19	Description		<p>Built Heritage. Photograph 063 of the corner of the ruins of the Young-Shannon mill, near the Côté Lake.</p>	
PHOTOGRAPH	19						
Description							
<p>Built Heritage. Photograph 063 of the corner of the ruins of the Young-Shannon mill, near the Côté Lake.</p>							

	<table border="1" style="width: 100%; border-collapse: collapse;"> <tr> <td style="width: 70%;">PHOTOGRAPH</td> <td style="width: 30%;">20</td> </tr> <tr> <td colspan="2" style="text-align: center;">Description</td> </tr> <tr> <td colspan="2"> <p>Built Heritage. Photograph 079 of remnants of part of a steam engine that once powered the mill, located near the Côté Lake.</p> </td> </tr> </table>	PHOTOGRAPH	20	Description		<p>Built Heritage. Photograph 079 of remnants of part of a steam engine that once powered the mill, located near the Côté Lake.</p>	
PHOTOGRAPH	20						
Description							
<p>Built Heritage. Photograph 079 of remnants of part of a steam engine that once powered the mill, located near the Côté Lake.</p>							

APPENDIX II - PHOTOGRAPHIC RECORD

PROJECT NO. TZ12023
 PROJECT Côté Gold Project, IAMGOLD
 LOCATION Chester, Yeo and Neville Townships

ENCLOSURE 11

	<table border="1" style="width: 100%; border-collapse: collapse;"> <tr> <td style="width: 70%;">PHOTOGRAPH</td> <td style="width: 30%;">21</td> </tr> <tr> <td colspan="2" style="text-align: center;">Description</td> </tr> <tr> <td colspan="2"> <p>Built Heritage. Photograph 304 of a row boat (York or Pointer style), at the Gosselin Mining Site.</p> </td> </tr> </table>	PHOTOGRAPH	21	Description		<p>Built Heritage. Photograph 304 of a row boat (York or Pointer style), at the Gosselin Mining Site.</p>	
PHOTOGRAPH	21						
Description							
<p>Built Heritage. Photograph 304 of a row boat (York or Pointer style), at the Gosselin Mining Site.</p>							


	<table border="1" style="width: 100%; border-collapse: collapse;"> <tr> <td style="width: 70%;">PHOTOGRAPH</td> <td style="width: 30%;">22</td> </tr> <tr> <td colspan="2" style="text-align: center;">Description</td> </tr> <tr> <td colspan="2"> <p>Built Heritage. Photograph 309 of a wagon hub, at the Gosselin Mining Site.</p> </td> </tr> </table>	PHOTOGRAPH	22	Description		<p>Built Heritage. Photograph 309 of a wagon hub, at the Gosselin Mining Site.</p>	
PHOTOGRAPH	22						
Description							
<p>Built Heritage. Photograph 309 of a wagon hub, at the Gosselin Mining Site.</p>							

APPENDIX II - PHOTOGRAPHIC RECORD

PROJECT NO. TZ12023
 PROJECT Côté Gold Project, IAMGOLD
 LOCATION Chester, Yeo and Neville Townships

ENCLOSURE 12

	<p>PHOTOGRAPH</p>	<p>23</p>
<p>Description</p>		
<p>Built Heritage. Photograph 310 of a barrel found at the Gosselin Mining Site.</p>		


	<p>PHOTOGRAPH</p>	<p>24</p>
<p>Description</p>		
<p>Built Heritage. Photograph 184 of the cookery ruins, located at the Gosselin Mining Site.</p>		

APPENDIX II - PHOTOGRAPHIC RECORD

PROJECT NO. TZ12023
 PROJECT Côté Gold Project, IAMGOLD
 LOCATION Chester, Yeo and Neville Townships

ENCLOSURE 13


	PHOTOGRAPH	25
	Description Built Heritage. Photograph 192 of the cookery, located at the Gosselin Mining Site.	


	PHOTOGRAPH	26
	Description Built Heritage. Photograph 202 of the bunkhouse ruins located at the Gosselin Mining Site.	

APPENDIX II - PHOTOGRAPHIC RECORD

PROJECT NO. TZ12023
 PROJECT Côté Gold Project, IAMGOLD
 LOCATION Chester, Yeo and Neville Townships

ENCLOSURE 14

	PHOTOGRAPH	27
	Description Built Heritage. Photograph 218 of the wall ruins of the bunkhouse, located at Gosselin Mining Site.	


	PHOTOGRAPH	28
	Description Built Heritage. Photograph 255 of the remains of the bunkhouse door, located at the Gosselin Mining Site.	

APPENDIX II - PHOTOGRAPHIC RECORD

PROJECT NO. TZ12023
 PROJECT Côté Gold Project, IAMGOLD
 LOCATION Chester, Yeo and Neville Townships

ENCLOSURE 15


	<table border="1" style="width: 100%; border-collapse: collapse;"> <tr> <td style="width: 70%;">PHOTOGRAPH</td> <td style="width: 30%;">29</td> </tr> <tr> <td colspan="2" style="text-align: center;">Description</td> </tr> <tr> <td colspan="2"> <p>Built Heritage. Photograph 267 of a former window, located at Gosselin Mining Site.</p> </td> </tr> </table>	PHOTOGRAPH	29	Description		<p>Built Heritage. Photograph 267 of a former window, located at Gosselin Mining Site.</p>	
PHOTOGRAPH	29						
Description							
<p>Built Heritage. Photograph 267 of a former window, located at Gosselin Mining Site.</p>							

	<table border="1" style="width: 100%; border-collapse: collapse;"> <tr> <td style="width: 70%;">PHOTOGRAPH</td> <td style="width: 30%;">30</td> </tr> <tr> <td colspan="2" style="text-align: center;">Description</td> </tr> <tr> <td colspan="2"> <p>Built Heritage. Photograph 280 of ruins of the privy/outhouse, located at Gosselin Mining Site.</p> </td> </tr> </table>	PHOTOGRAPH	30	Description		<p>Built Heritage. Photograph 280 of ruins of the privy/outhouse, located at Gosselin Mining Site.</p>	
PHOTOGRAPH	30						
Description							
<p>Built Heritage. Photograph 280 of ruins of the privy/outhouse, located at Gosselin Mining Site.</p>							

APPENDIX II - PHOTOGRAPHIC RECORD

PROJECT NO. TZ12023
 PROJECT Côté Gold Project, IAMGOLD
 LOCATION Chester, Yeo and Neville Townships

ENCLOSURE 16

	PHOTOGRAPH	31
	Description Built Heritage. Photograph 546 of the Cryderman Site. Within this site, there were two buildings one cabin and one possible a dynamite shed.	