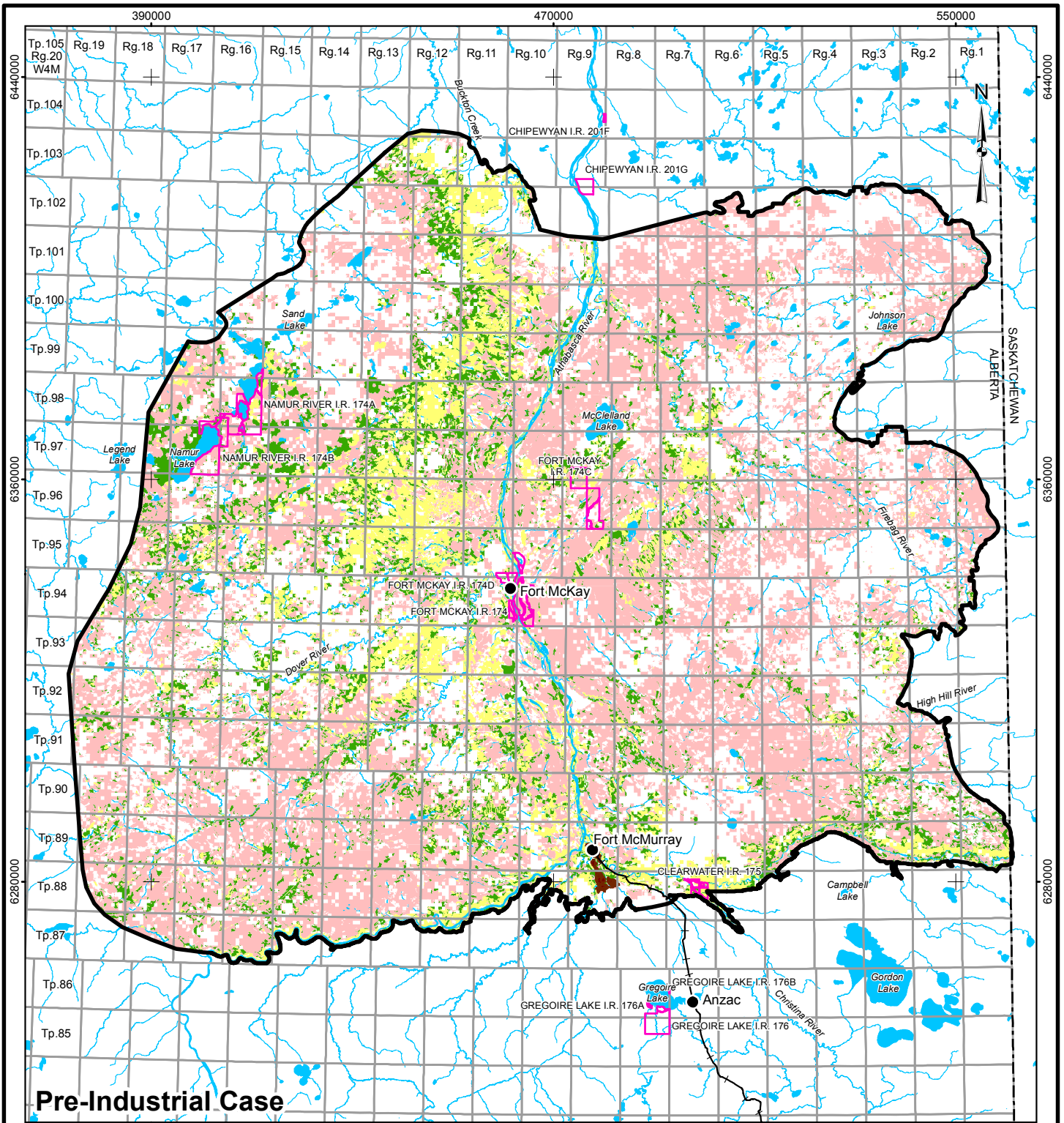


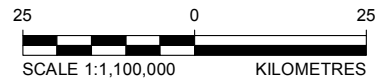
I:\CLIENTS\SHELL13-1346-0001\Mapping\MXD\Wildlife Modelling\FINAL\1313460001_VW_001_PIC_RSA-BarredOwl_GIS.mxd



Pre-Industrial Case

LEGEND

- COMMUNITY
- RAILWAY
- WATERCOURSE
- OPEN WATER
- INDIAN RESERVE
- PROVINCIAL BOUNDARY
- TERRESTRIAL RESOURCES REGIONAL STUDY AREA
- DISTURBED
- EXISTING AND APPROVED URBAN AND INDUSTRIAL DISTURBANCE
- EXISTING AND APPROVED URBAN AND INDUSTRIAL LINEAR DISTURBANCE
- HABITAT SUITABILITY
- HIGH
- MODERATE
- LOW
- NIL

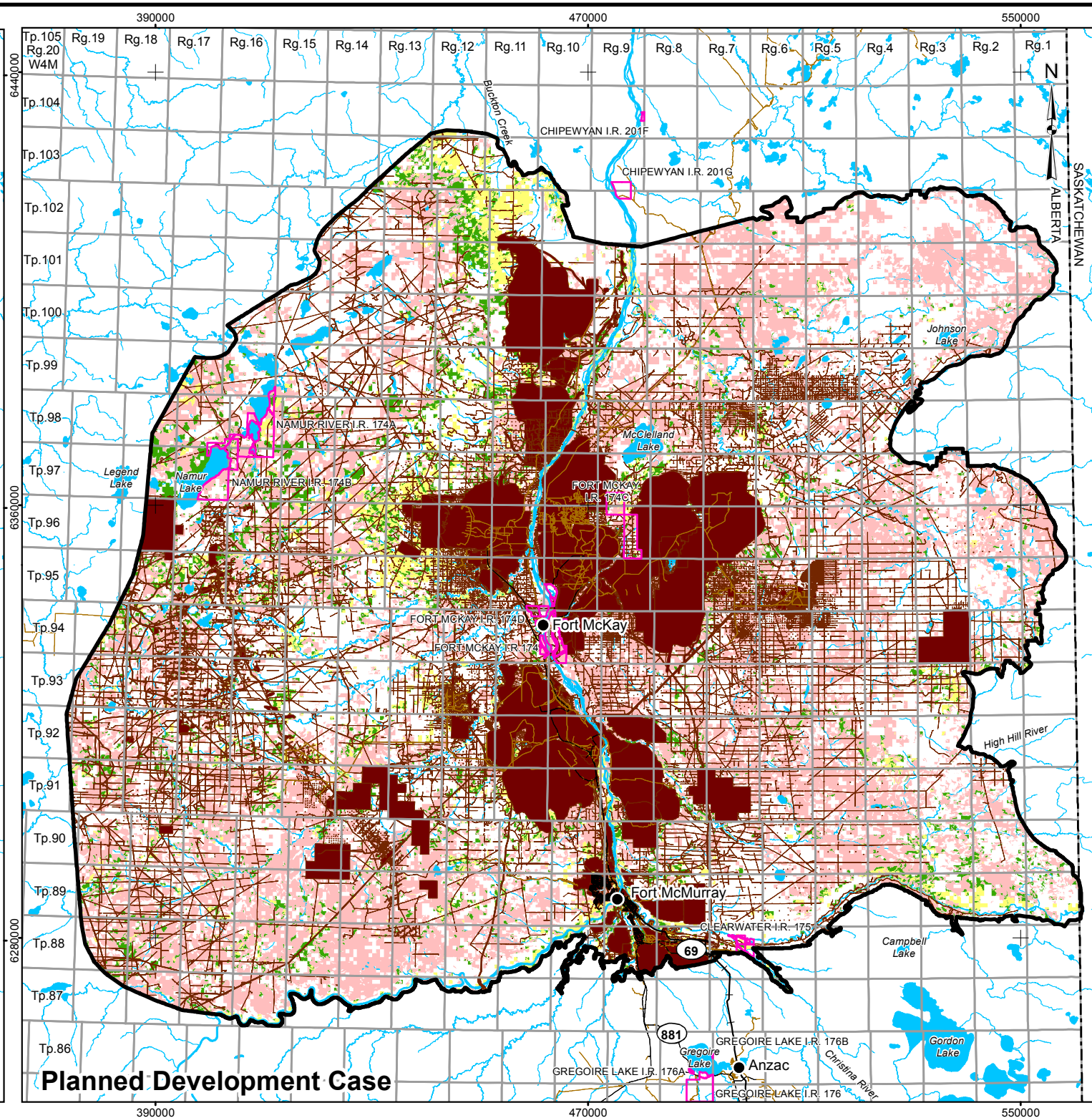
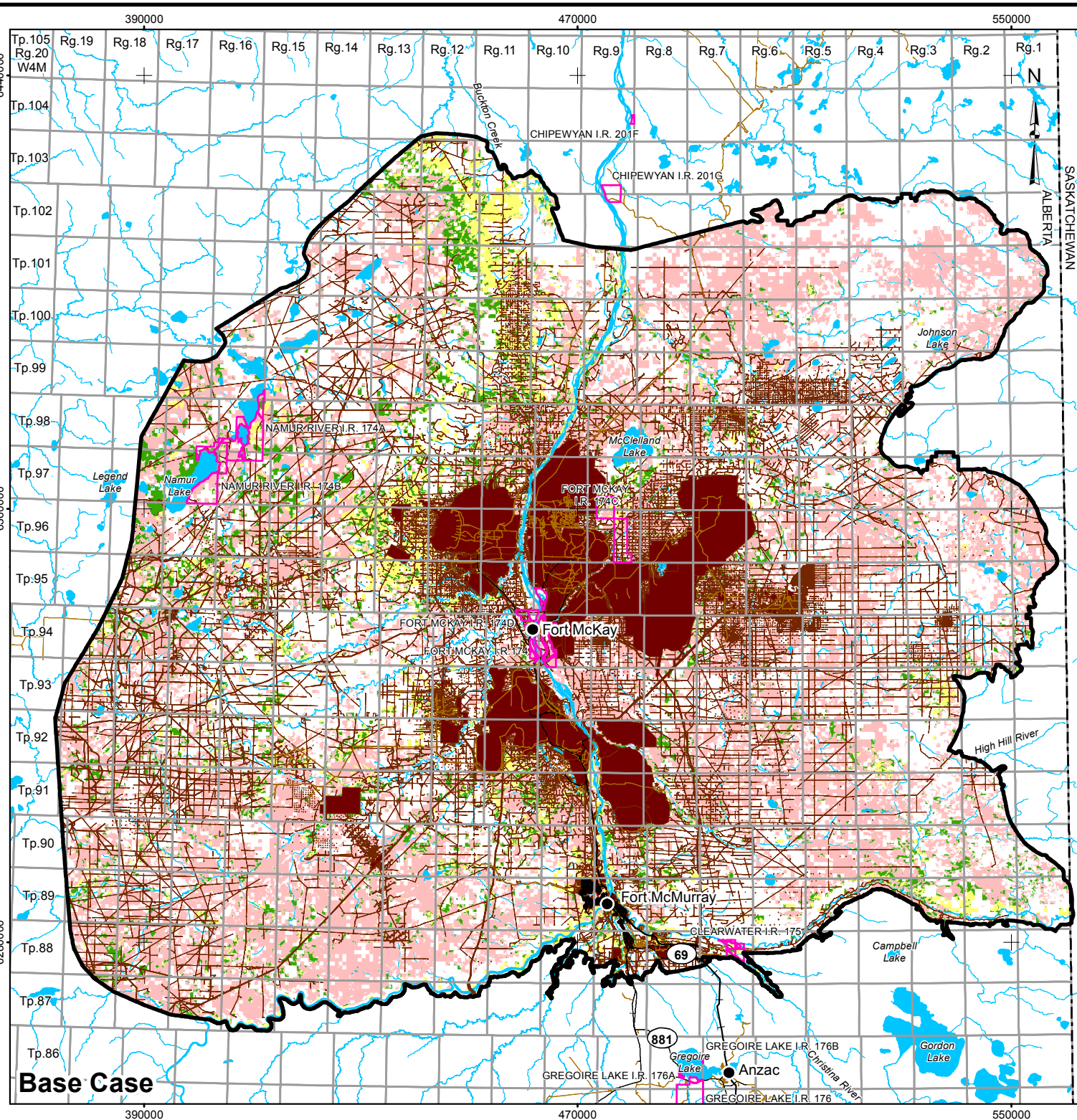


REFERENCE

ALBERTA DIGITAL BASE DATA OBTAINED FROM ALTALIS LTD. © GOVERNMENT OF ALBERTA 2013. PROVINCIAL BOUNDARY OBTAINED FROM IHS ENERGY INC. DATUM: NAD83 PROJECTION: UTM ZONE 12N

PROJECT					
PIERRE RIVER MINE PROJECT					
TITLE					
BARRED OWL PRE-INDUSTRIAL CASE HABITAT SUITABILITY IN THE REGIONAL STUDY AREA					
<p>Shell Canada Limited</p>	PROJECT	PROJECT NO.	FILE No.		
	DESIGN	BS	26 Apr 2013	SCALE AS SHOWN	REV. 0
	GIS	CH	20 Jun 2013	FIGURE: 1	
	CHECK	CY	27 May 2013		
REVIEW	MGJ	27 May 2013			

I:\CLIENTS\SHELL\13-1346-0001\Mapping\MXD\Wildlife Modelling\FINAL\131346000_1_WM_002_RSA-BarredOwl_GIS.mxd



LEGEND

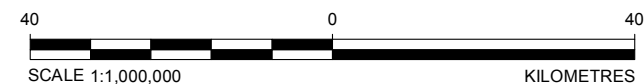
- COMMUNITY
- PAVED ROAD
- UNPAVED ROAD
- RAILWAY
- WATERCOURSE
- INDIAN RESERVE
- PROVINCIAL BOUNDARY
- TERRESTRIAL RESOURCES REGIONAL STUDY AREA
- OPEN WATER

DISTURBED


- EXISTING AND APPROVED URBAN AND INDUSTRIAL DISTURBANCE
- EXISTING AND APPROVED URBAN AND INDUSTRIAL LINEAR DISTURBANCE

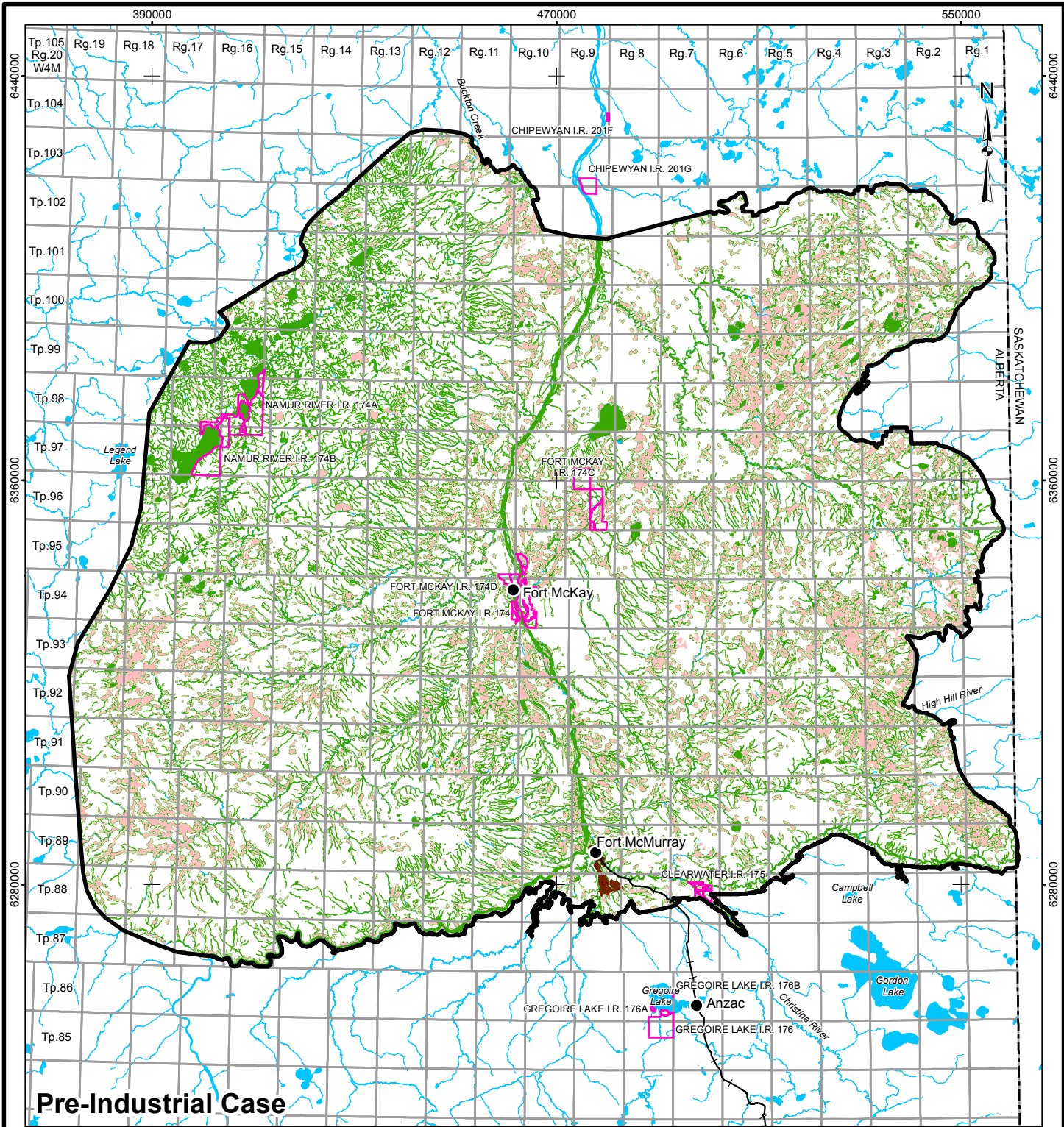
HABITAT SUITABILITY

- HIGH
- MODERATE
- LOW
- NIL



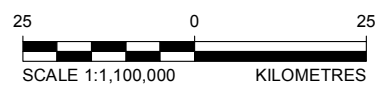
REFERENCE
 ALBERTA DIGITAL BASE DATA OBTAINED FROM ALTALIS LTD. ©
 GOVERNMENT OF ALBERTA 2013. PROVINCIAL BOUNDARY
 OBTAINED FROM IHS ENERGY INC.
 DATUM: NAD83 PROJECTION: UTM ZONE 12N

PROJECT				
PIERRE RIVER MINE PROJECT				
TITLE				
BARRED OWL HABITAT SUITABILITY IN THE REGIONAL STUDY AREA				
 Shell Canada Limited	PROJECT	PROJECT NO.	FILE No.	
	DESIGN	BS	26 Apr. 2013	SCALE AS SHOWN
	GIS	CH	20 Jun 2013	REV. 0
	CHECK	CY	27 May 2013	FIGURE: 2
	REVIEW	MGJ	27 May 2013	



Pre-Industrial Case

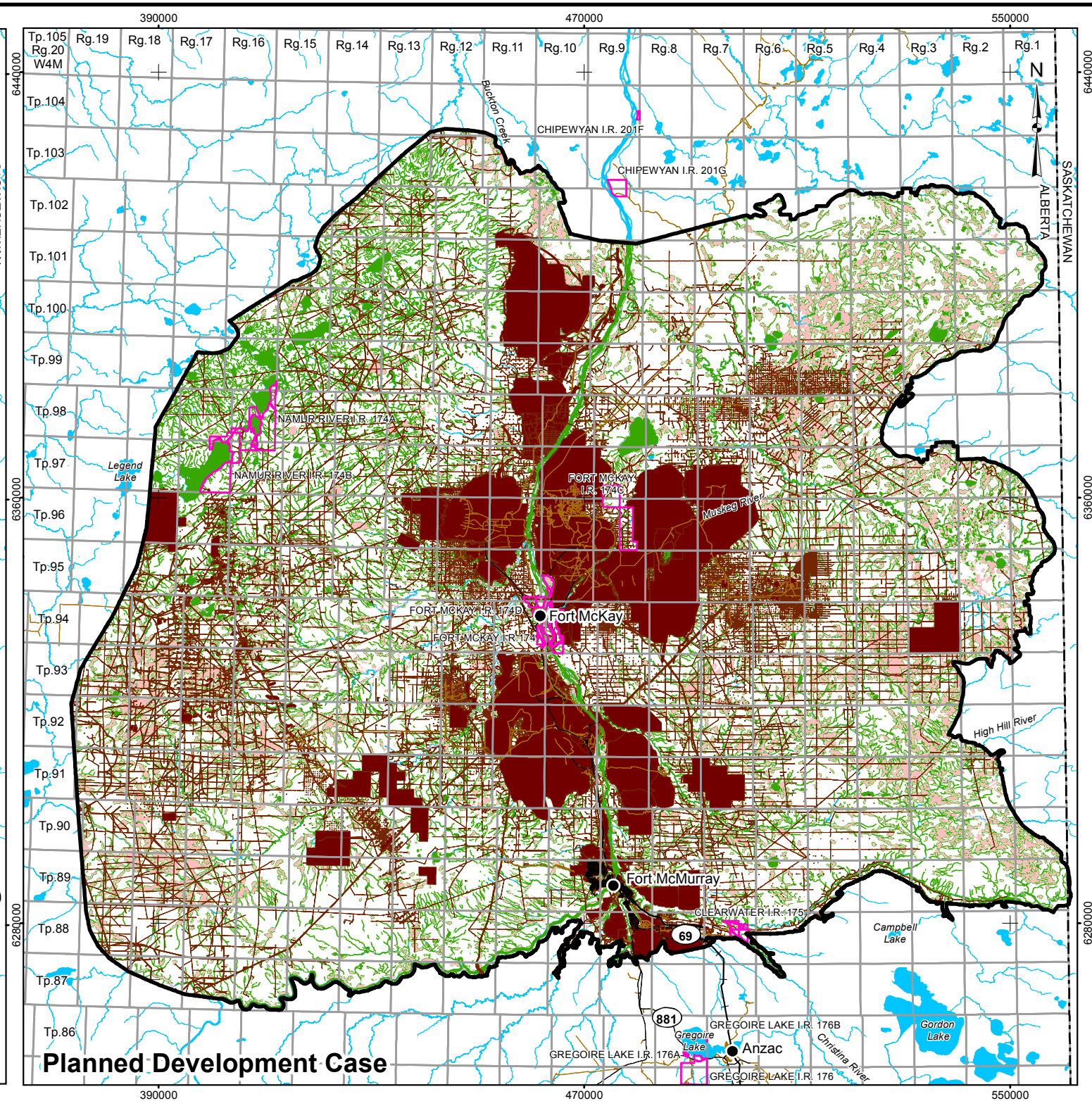
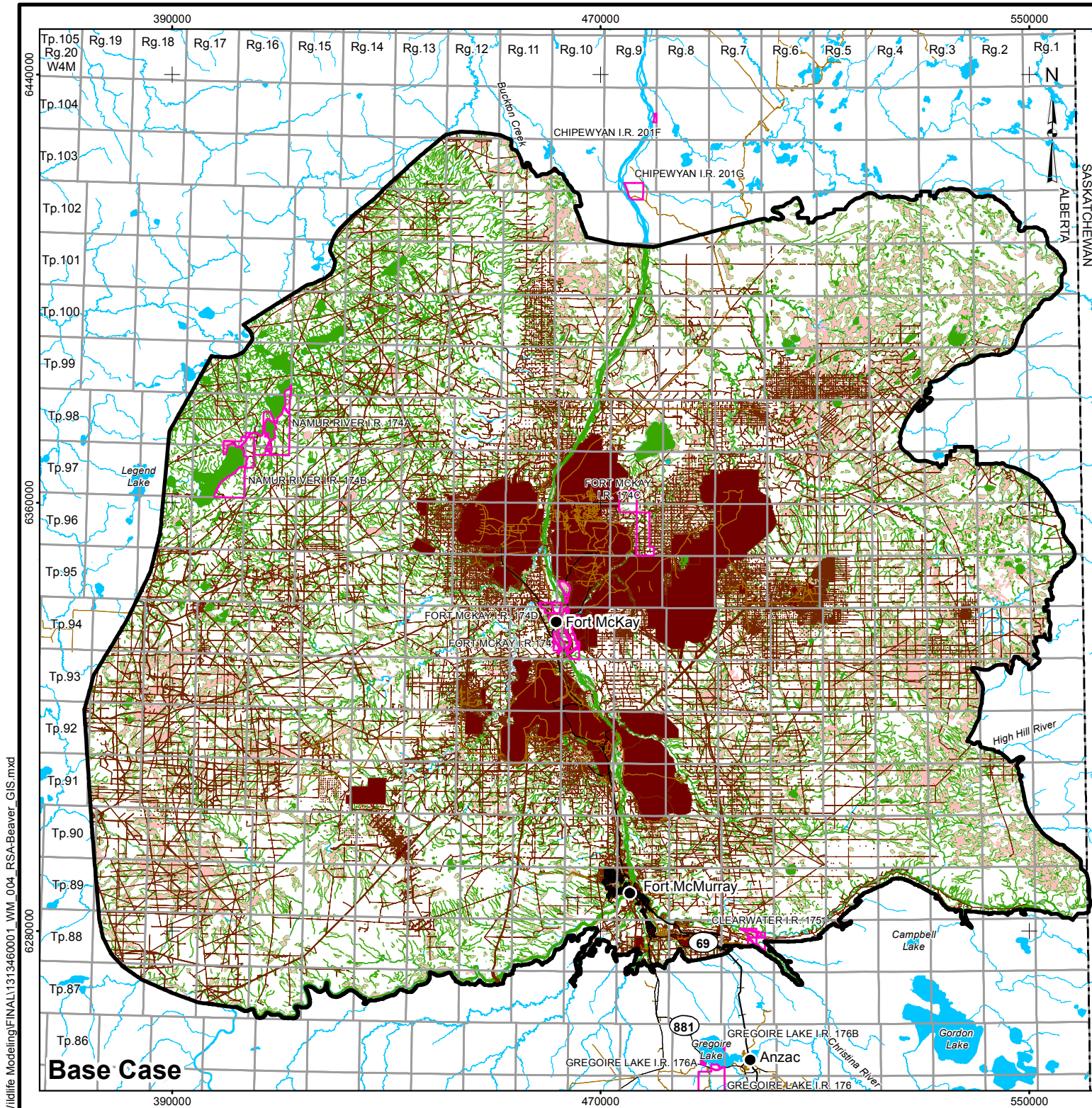
- LEGEND**
- COMMUNITY
 - RAILWAY
 - WATERCOURSE
 - INDIAN RESERVE
 - PROVINCIAL BOUNDARY
 - TERRESTRIAL RESOURCES REGIONAL STUDY AREA
 - OPEN WATER
 - DISTURBED**
 - EXISTING AND APPROVED URBAN AND INDUSTRIAL DISTURBANCE
 - EXISTING AND APPROVED URBAN AND INDUSTRIAL LINEAR DISTURBANCE
 - HABITAT SUITABILITY**
 - HIGH
 - LOW
 - NIL



PROJECT				
PIERRE RIVER MINE PROJECT				
TITLE				
BEAVER PRE-INDUSTRIAL CASE HABITAT SUITABILITY IN THE REGIONAL STUDY AREA				
 Shell Canada Limited	PROJECT	PROJECT NO.	FILE No.	
	DESIGN	BS	26 Apr 2013	SCALE AS SHOWN
	GIS	CH	20 Jun 2013	REV. 0
	CHECK	CY	27 May 2013	FIGURE: 3
REVIEW	MGJ	27 May 2013		

REFERENCE
 ALBERTA DIGITAL BASE DATA OBTAINED FROM ALTALIS LTD. © GOVERNMENT OF ALBERTA 2013. PROVINCIAL BOUNDARY OBTAINED FROM IHS ENERGY INC. DATUM: NAD83 PROJECTION: UTM ZONE 12N

I:\CLIENTS\SHELL113-1346-0001\Mapping\MXD\Wildlife Modelling\FINAL\113-134-60001_VM_003_PIC_RSA-Beaver_GIS.mxd

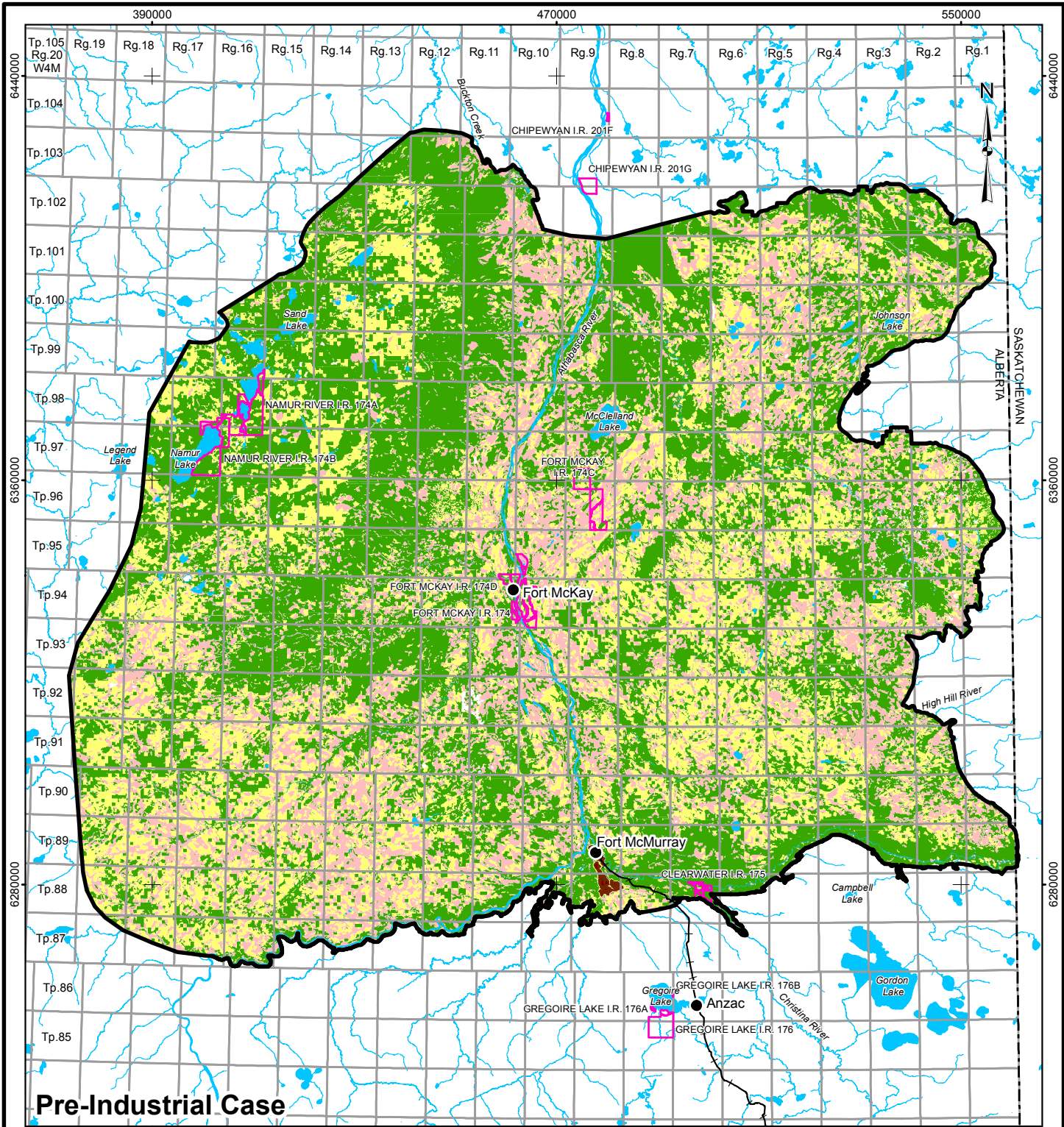


- LEGEND**
- COMMUNITY
 - PAVED ROAD
 - UNPAVED ROAD
 - RAILWAY
 - WATERCOURSE
 - INDIAN RESERVE
 - PROVINCIAL BOUNDARY
 - TERRESTRIAL RESOURCES REGIONAL STUDY AREA
 - OPEN WATER
 - DISTURBED
 - EXISTING AND APPROVED URBAN AND INDUSTRIAL DISTURBANCE
 - EXISTING AND APPROVED URBAN AND INDUSTRIAL LINEAR DISTURBANCE
 - HABITAT SUITABILITY
 - HIGH
 - LOW
 - NIL



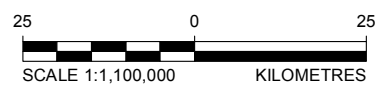
REFERENCE
 ALBERTA DIGITAL BASE DATA OBTAINED FROM ALTALIS LTD. ©
 GOVERNMENT OF ALBERTA 2013. PROVINCIAL BOUNDARY
 OBTAINED FROM IHS ENERGY INC.
 DATUM: NAD83 PROJECTION: UTM ZONE 12N


PROJECT				
PIERRE RIVER MINE PROJECT				
TITLE				
BEAVER HABITAT SUITABILITY IN THE REGIONAL STUDY AREA				
	PROJECT	PROJECT NO.	FILE No.	
	DESIGN	BS	26 Apr. 2013	SCALE AS SHOWN
	GIS	CH	20 Jun 2013	REV. 0
	CHECK	CY	27 May 2013	
	REVIEW	MGJ	27 May 2013	
				FIGURE: 4



Pre-Industrial Case

- LEGEND**
- COMMUNITY
 - RAILWAY
 - WATERCOURSE
 - INDIAN RESERVE
 - PROVINCIAL BOUNDARY
 - TERRESTRIAL RESOURCES REGIONAL STUDY AREA
 - OPEN WATER
 - DISTURBED**
 - EXISTING AND APPROVED URBAN AND INDUSTRIAL DISTURBANCE
 - EXISTING AND APPROVED URBAN AND INDUSTRIAL LINEAR DISTURBANCE
 - HABITAT SUITABILITY**
 - HIGH
 - MODERATE
 - LOW
 - NIL

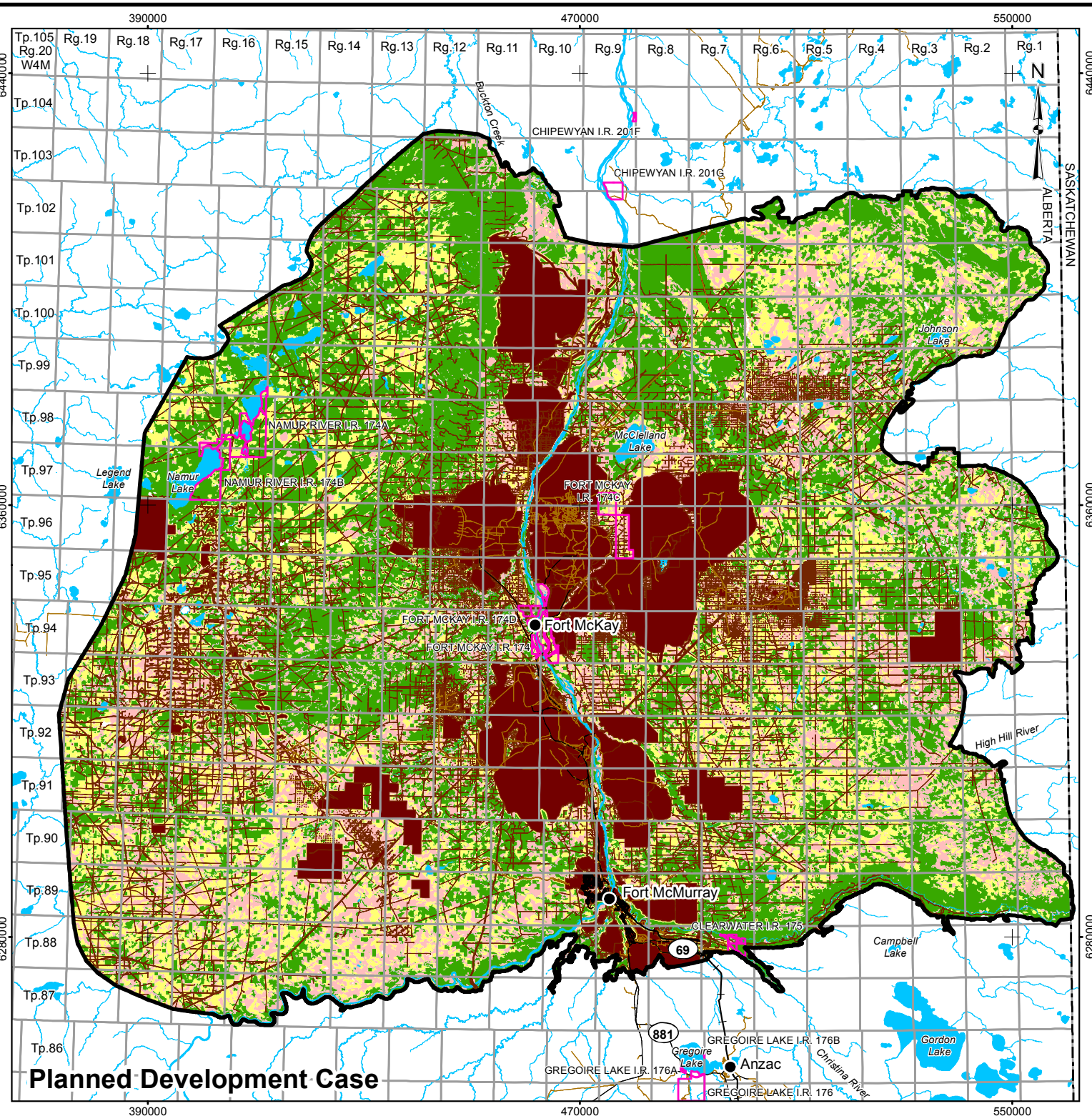
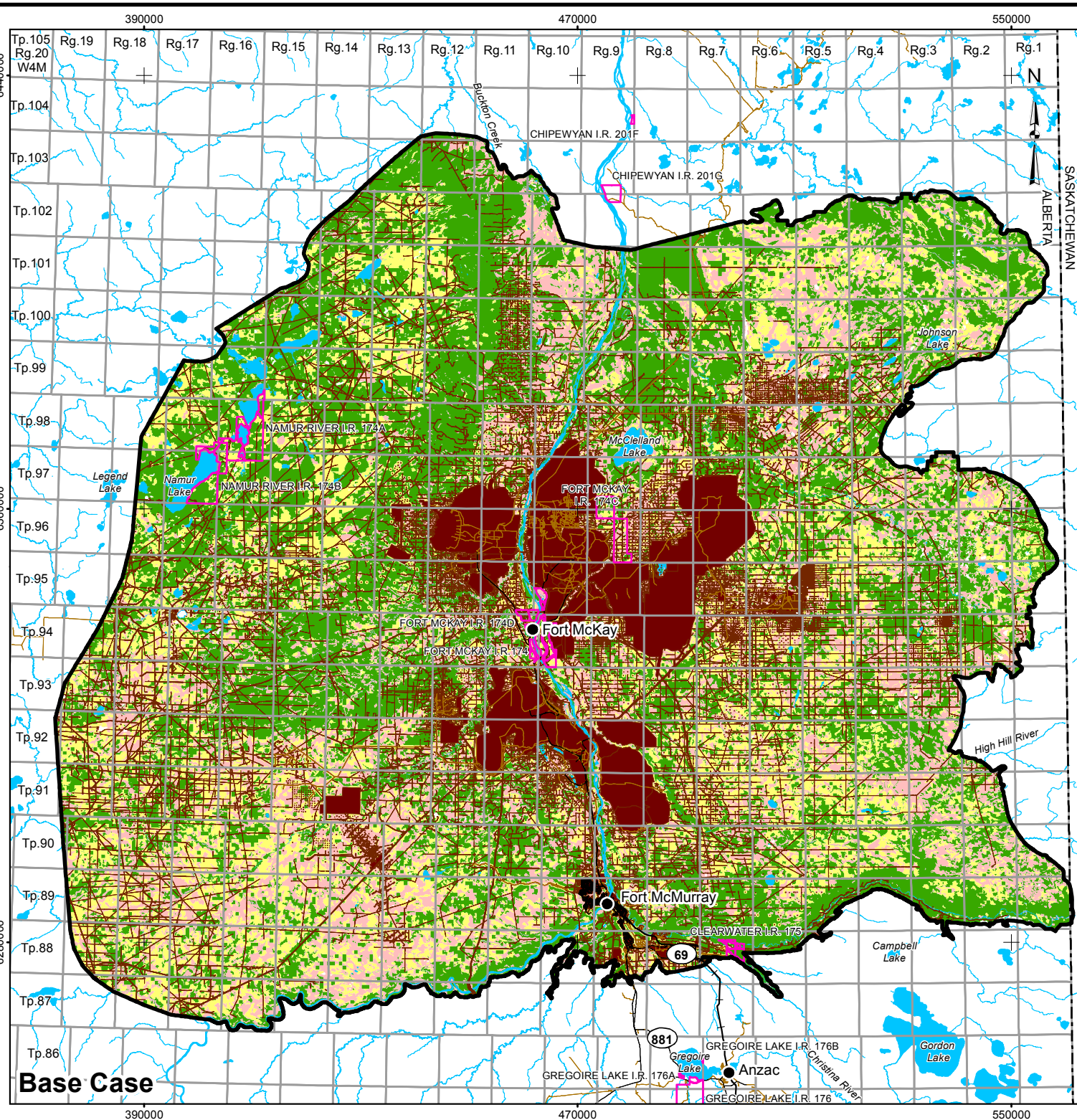


PROJECT				
PIERRE RIVER MINE PROJECT				
TITLE				
BLACK BEAR PRE-INDUSTRIAL CASE HABITAT SUITABILITY IN THE REGIONAL STUDY AREA				
 Shell Canada Limited	PROJECT	PROJECT NO.	FILE No.	
	DESIGN	BS	26 Apr 2013	SCALE AS SHOWN
	GIS	CH	20 Jun 2013	REV. 0
	CHECK	CY	27 May 2013	
	REVIEW	MGJ	27 May 2013	
FIGURE: 5				

REFERENCE
 ALBERTA DIGITAL BASE DATA OBTAINED FROM ALTALIS LTD. © GOVERNMENT OF ALBERTA 2013. PROVINCIAL BOUNDARY OBTAINED FROM IHS ENERGY INC. DATUM: NAD83 PROJECTION: UTM ZONE 12N

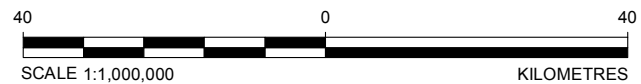
I:\CLIENTS\SHELL13-1346-0001\Mappping\MXD\Wildlife Modelling\FINAL\1313460001_WM_005_PIC_RSA-BlackBear_GIS.mxd

I:\CLIENTS\SHELL\13-1346-0001\mapping\MXD\Wildlife Modelling\FINAL\131346000_1_WM_006_RSA-BlackBear_GIS.mxd




LEGEND

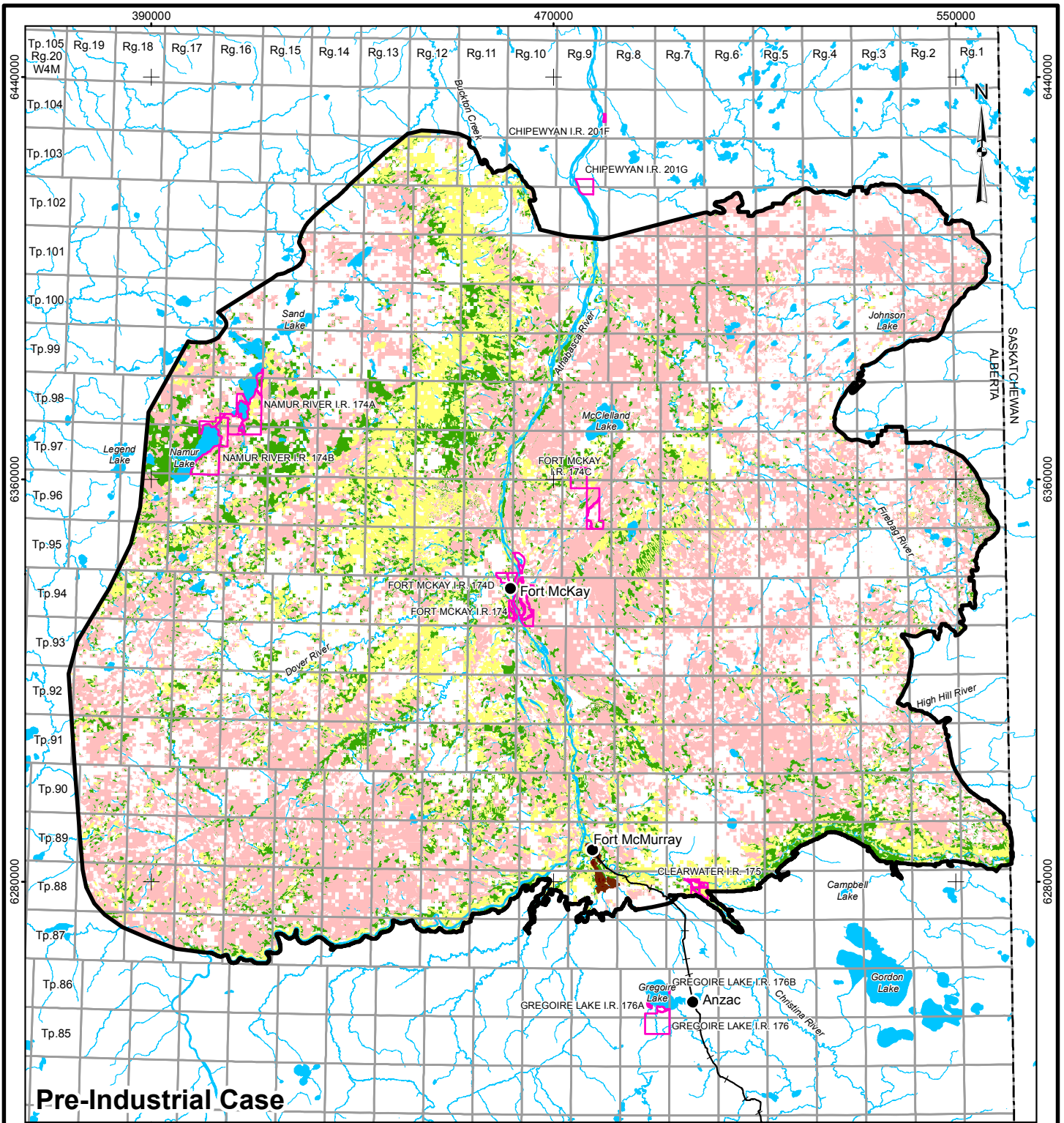
● COMMUNITY	DISTURBED
— PAVED ROAD	■ EXISTING AND APPROVED URBAN AND INDUSTRIAL DISTURBANCE
— UNPAVED ROAD	— EXISTING AND APPROVED URBAN AND INDUSTRIAL LINEAR DISTURBANCE
— RAILWAY	
— WATERCOURSE	HABITAT SUITABILITY
□ INDIAN RESERVE	■ HIGH
— PROVINCIAL BOUNDARY	■ MODERATE
□ TERRESTRIAL RESOURCES REGIONAL STUDY AREA	■ LOW
■ OPEN WATER	□ NIL



REFERENCE
 ALBERTA DIGITAL BASE DATA OBTAINED FROM ALTALIS LTD. ©
 GOVERNMENT OF ALBERTA 2013. PROVINCIAL BOUNDARY
 OBTAINED FROM IHS ENERGY INC.
 DATUM: NAD83 PROJECTION: UTM ZONE 12N

PROJECT				
PIERRE RIVER MINE PROJECT				
TITLE				
BLACK BEAR HABITAT SUITABILITY IN THE REGIONAL STUDY AREA				
 Shell Canada Limited	PROJECT	PROJECT NO.	FILE No.	
	DESIGN	BS	26 Apr 2013	SCALE AS SHOWN
	GIS	CH	20 Jun 2013	REV. 0
	CHECK	CY	27 May 2013	
	REVIEW	MGJ	27 May 2013	
				FIGURE: 6

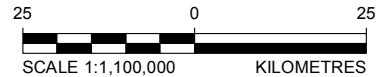
I:\CLIENTS\SHELL13-1346-0001\Mapping\MXD\Wildlife Modelling\FINAL\1313460001_VM_007_PIC_RSA-BTGreenWarbler_GIS.mxd



Pre-Industrial Case


LEGEND

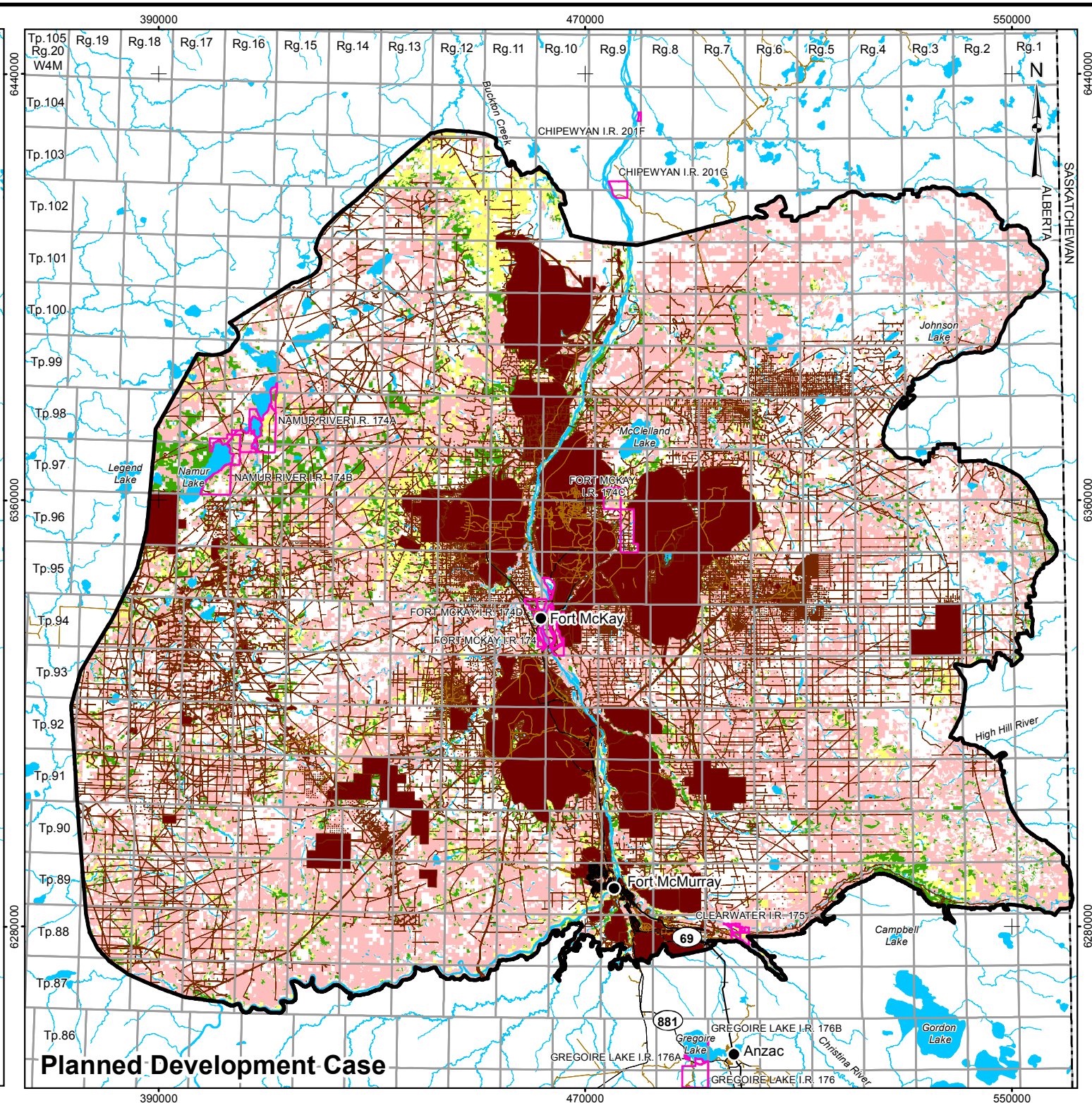
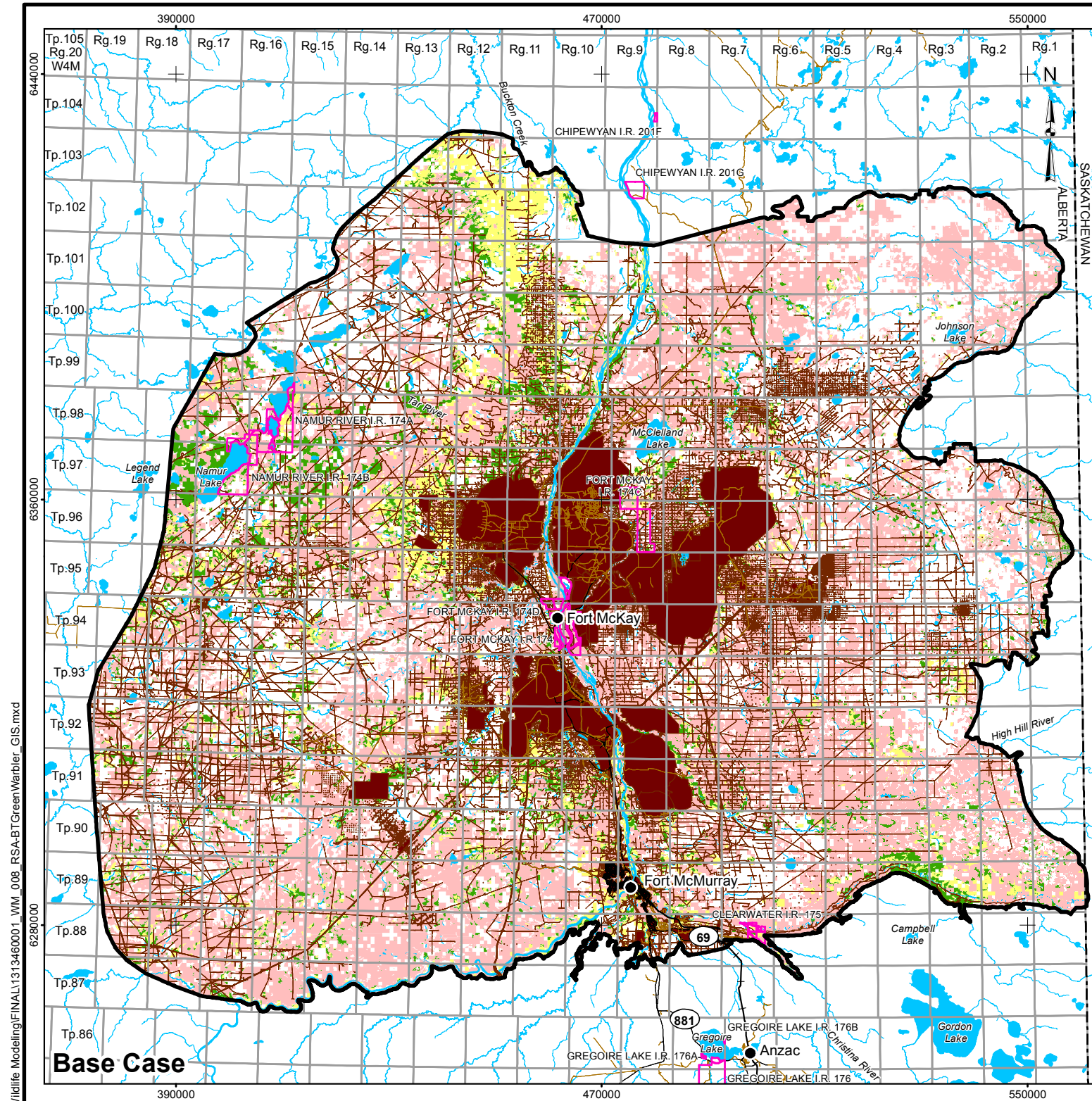
- COMMUNITY
- RAILWAY
- WATERCOURSE
- INDIAN RESERVE
- PROVINCIAL BOUNDARY
- TERRESTRIAL RESOURCES REGIONAL STUDY AREA
- OPEN WATER
- DISTURBED**
- EXISTING AND APPROVED URBAN AND INDUSTRIAL DISTURBANCE
- EXISTING AND APPROVED URBAN AND INDUSTRIAL LINEAR DISTURBANCE
- HABITAT SUITABILITY**
- HIGH
- MODERATE
- LOW
- NIL



REFERENCE

ALBERTA DIGITAL BASE DATA OBTAINED FROM ALTALIS LTD. © GOVERNMENT OF ALBERTA 2013. PROVINCIAL BOUNDARY OBTAINED FROM IHS ENERGY INC. DATUM: NAD83 PROJECTION: UTM ZONE 12N

PROJECT				
PIERRE RIVER MINE PROJECT				
TITLE				
BLACK-THROATED GREEN WARBLER PRE-INDUSTRIAL CASE HABITAT SUITABILITY IN THE REGIONAL STUDY AREA				
 Shell Canada Limited	PROJECT	PROJECT NO.	FILE No.	
	DESIGN	BS	26 Apr 2013	SCALE AS SHOWN
	GIS	CH	20 Jun 2013	REV. 0
	CHECK	CY	27 May 2013	FIGURE: 7
	REVIEW	MGJ	27 May 2013	




- LEGEND**
- COMMUNITY
 - PAVED ROAD
 - UNPAVED ROAD
 - RAILWAY
 - WATERCOURSE
 - INDIAN RESERVE
 - PROVINCIAL BOUNDARY
 - TERRESTRIAL RESOURCES REGIONAL STUDY AREA
 - OPEN WATER
- DISTURBED**
- EXISTING AND APPROVED URBAN AND INDUSTRIAL DISTURBANCE
 - EXISTING AND APPROVED URBAN AND INDUSTRIAL LINEAR DISTURBANCE
- HABITAT SUITABILITY**
- HIGH
 - MODERATE
 - LOW
 - NIL

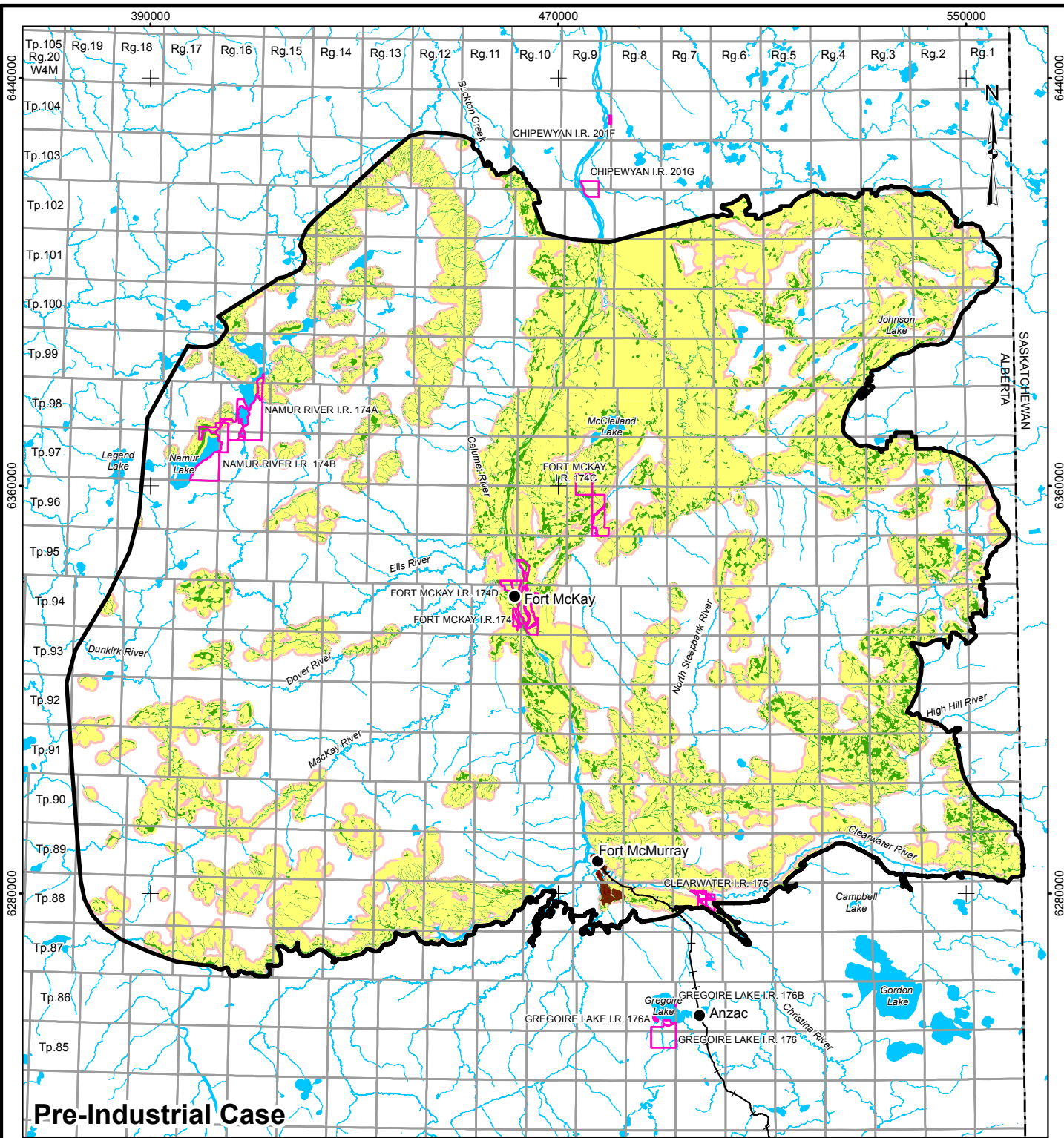


REFERENCE

ALBERTA DIGITAL BASE DATA OBTAINED FROM ALTALIS LTD. © GOVERNMENT OF ALBERTA 2013. PROVINCIAL BOUNDARY OBTAINED FROM IHS ENERGY INC. DATUM: NAD83 PROJECTION: UTM ZONE 12N

PROJECT				
PIERRE RIVER MINE PROJECT				
TITLE				
BLACK-THROATED GREEN WARBLER HABITAT SUITABILITY IN THE REGIONAL STUDY AREA				
 Shell Canada Limited	PROJECT	PROJECT NO.	FILE No.	
	DESIGN	BS	26 Apr 2013	SCALE AS SHOWN
	GIS	CH	20 Jun 2013	REV. 0
	CHECK	CY	27 May 2013	
	REVIEW	MGJ	27 May 2013	
				FIGURE: 8

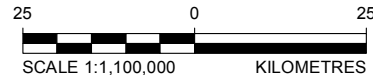
I:\CLIENTS\SHELL\13-1346-0001\mapping\MXD\Wildlife Modelling\FINAL\131346000_1_WM_008_RSA-BTGreenWarbler_GIS.mxd



Pre-Industrial Case

LEGEND

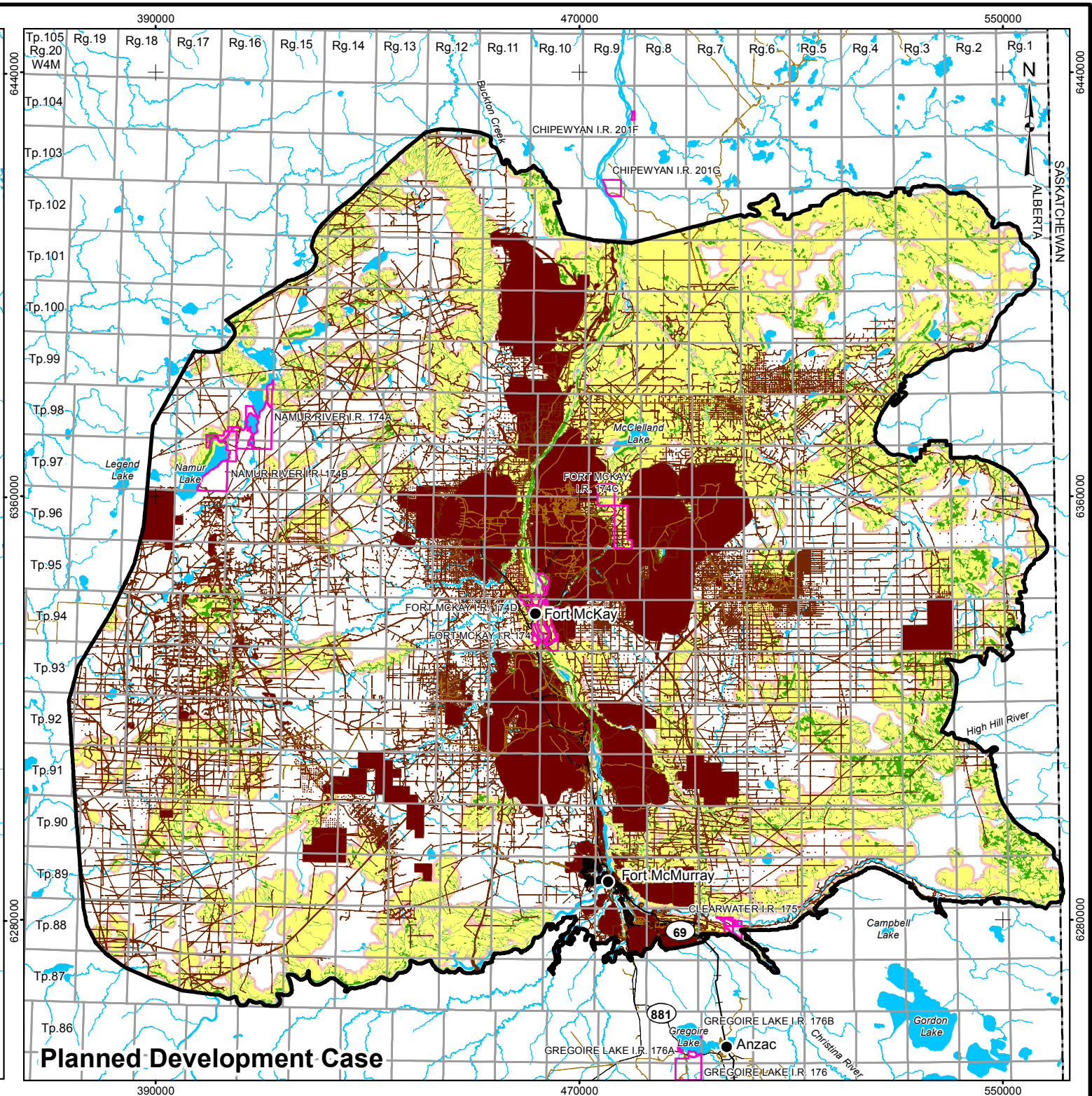
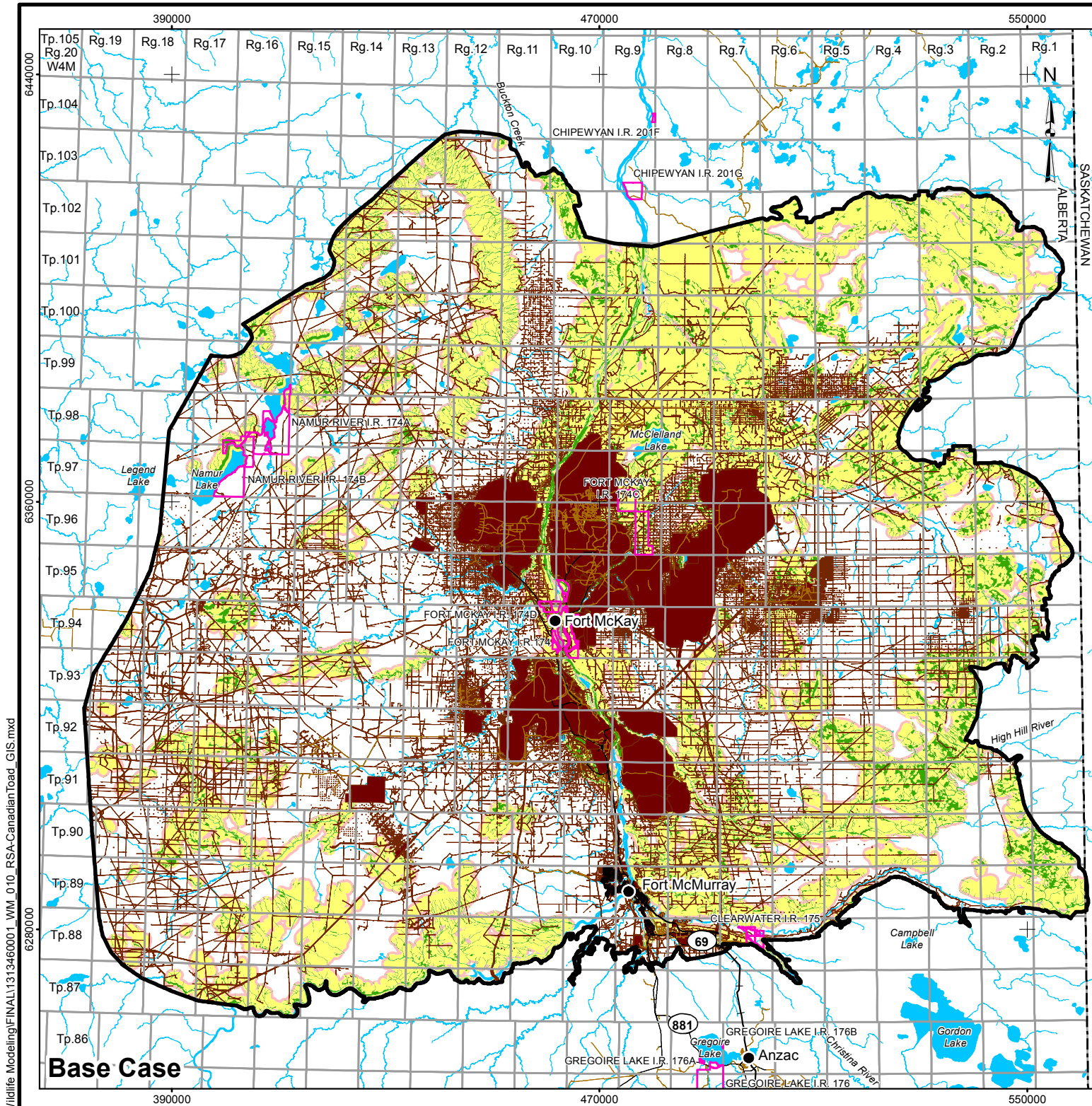
- COMMUNITY
- RAILWAY
- WATERCOURSE
- INDIAN RESERVE
- PROVINCIAL BOUNDARY
- TERRESTRIAL RESOURCES REGIONAL STUDY AREA
- OPEN WATER
- DISTURBED**
- EXISTING AND APPROVED URBAN AND INDUSTRIAL DISTURBANCE
- EXISTING AND APPROVED URBAN AND INDUSTRIAL LINEAR DISTURBANCE
- HABITAT SUITABILITY**
- HIGH
- MODERATE
- LOW
- NIL



REFERENCE

ALBERTA DIGITAL BASE DATA OBTAINED FROM ALTALIS LTD. © GOVERNMENT OF ALBERTA 2013. PROVINCIAL BOUNDARY OBTAINED FROM IHS ENERGY INC. DATUM: NAD83 PROJECTION: UTM ZONE 12N

PROJECT				
PIERRE RIVER MINE PROJECT				
TITLE				
CANADIAN TOAD PRE-INDUSTRIAL CASE HABITAT SUITABILITY IN THE REGIONAL STUDY AREA				
 Shell Canada Limited	PROJECT	PROJECT NO.	FILE No.	
	DESIGN	BS	26 Apr 2013	SCALE AS SHOWN
	GIS	CH	20 Jun 2013	REV. 0
	CHECK	CY	27 May 2013	FIGURE: 9
	REVIEW	MGJ	27 May 2013	



LEGEND

● COMMUNITY	DISTURBED
— PAVED ROAD	■ EXISTING AND APPROVED URBAN AND INDUSTRIAL DISTURBANCE
— UNPAVED ROAD	— EXISTING AND APPROVED URBAN AND INDUSTRIAL LINEAR DISTURBANCE
— RAILWAY	HABITAT SUITABILITY
— WATERCOURSE	■ HIGH
□ INDIAN RESERVE	■ MODERATE
— PROVINCIAL BOUNDARY	■ LOW
— TERRESTRIAL RESOURCES REGIONAL STUDY AREA	□ NIL
■ OPEN WATER	

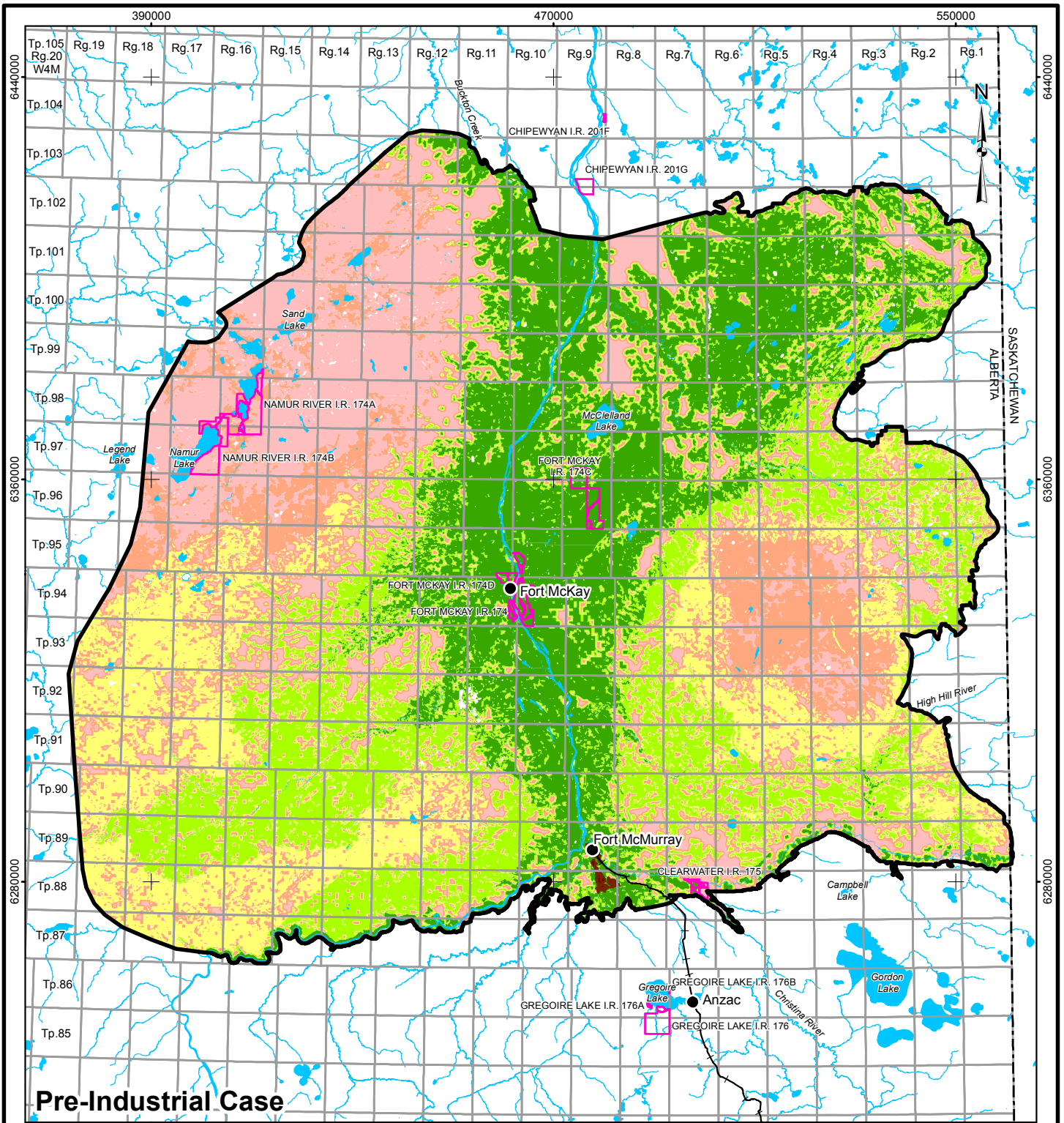


REFERENCE
 ALBERTA DIGITAL BASE DATA OBTAINED FROM ALTALIS LTD. ©
 GOVERNMENT OF ALBERTA 2013. PROVINCIAL BOUNDARY
 OBTAINED FROM IHS ENERGY INC.
 DATUM: NAD83 PROJECTION: UTM ZONE 12N

PROJECT			
PIERRE RIVER MINE PROJECT			
TITLE			
CANADIAN TOAD HABITAT SUITABILITY IN THE REGIONAL STUDY AREA			
	PROJECT	PROJECT NO.	FILE No.
	DESIGN	BS	26 Apr 2013
	GIS	CH	20 Jun 2013
	CHECK	CY	27 May 2013
	REVIEW	MGJ	27 May 2013
SCALE AS SHOWN			REV. 0
FIGURE: 10			

I:\CLIENTS\SHELL\13-1346-0001\mapping\MXD\Wildlife Modelling\FINAL\131346000_1_WM_010_RSA-CanadianToad_GIS.mxd

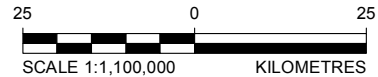
I:\CLIENTS\SHELL13-1346-0001\Mapping\MXD\Wildlife Modelling\FINAL1313460001_VW_011_PIC_RSA-FisherMarten_GIS.mxd



Pre-Industrial Case

LEGEND

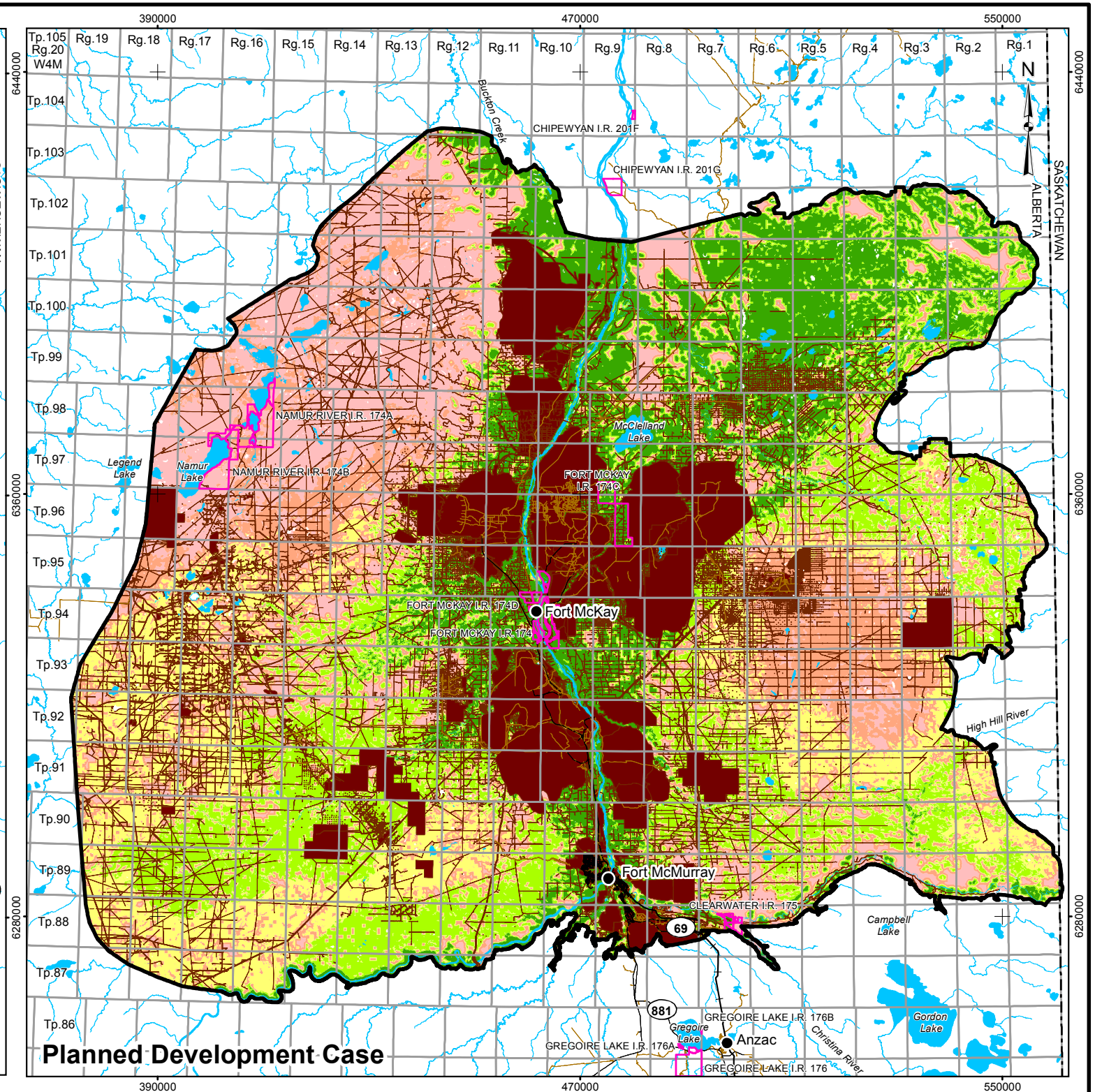
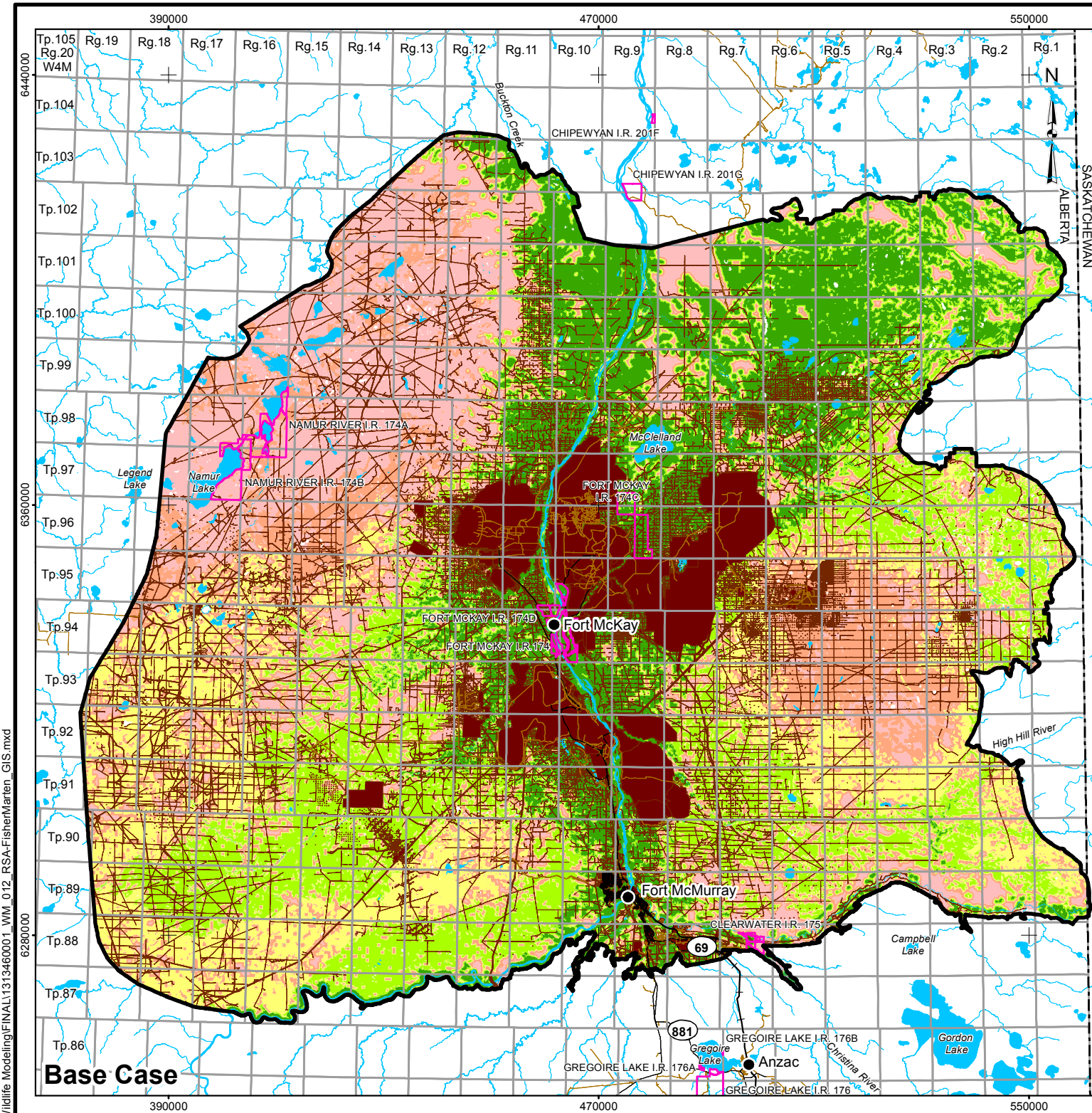
- COMMUNITY
- RAILWAY
- WATERCOURSE
- INDIAN RESERVE
- PROVINCIAL BOUNDARY
- TERRESTRIAL RESOURCES REGIONAL STUDY AREA
- OPEN WATER
- DISTURBED**
- EXISTING AND APPROVED URBAN AND INDUSTRIAL DISTURBANCE
- EXISTING AND APPROVED URBAN AND INDUSTRIAL LINEAR DISTURBANCE
- HABITAT SUITABILITY**
- HIGH
- MODERATE HIGH
- MODERATE
- MODERATE LOW
- LOW
- NIL



REFERENCE

ALBERTA DIGITAL BASE DATA OBTAINED FROM ALTALIS LTD. © GOVERNMENT OF ALBERTA 2013. PROVINCIAL BOUNDARY OBTAINED FROM IHS ENERGY INC. DATUM: NAD83 PROJECTION: UTM ZONE 12N

PROJECT				
PIERRE RIVER MINE PROJECT				
TITLE				
FISHER/MARTEN PRE-INDUSTRIAL CASE HABITAT SUITABILITY IN THE REGIONAL STUDY AREA				
	PROJECT	PROJECT NO.	FILE No.	
	DESIGN	BS	26 Apr 2013	SCALE AS SHOWN
	GIS	CH	20 Jun 2013	REV. 0
	CHECK	CY	27 May 2013	FIGURE: 11
REVIEW	MGJ	27 May 2013		



LEGEND

● COMMUNITY	DISTURBED	HABITAT SUITABILITY
— PAVED ROAD	■ EXISTING AND APPROVED URBAN AND INDUSTRIAL DISTURBANCE	■ HIGH
— UNPAVED ROAD	■ EXISTING AND APPROVED URBAN AND INDUSTRIAL LINEAR DISTURBANCE	■ MODERATE HIGH
— RAILWAY		■ MODERATE
— WATERCOURSE		■ MODERATE LOW
□ INDIAN RESERVE		■ LOW
— PROVINCIAL BOUNDARY		■ NIL
□ TERRESTRIAL RESOURCES REGIONAL STUDY AREA		
■ OPEN WATER		

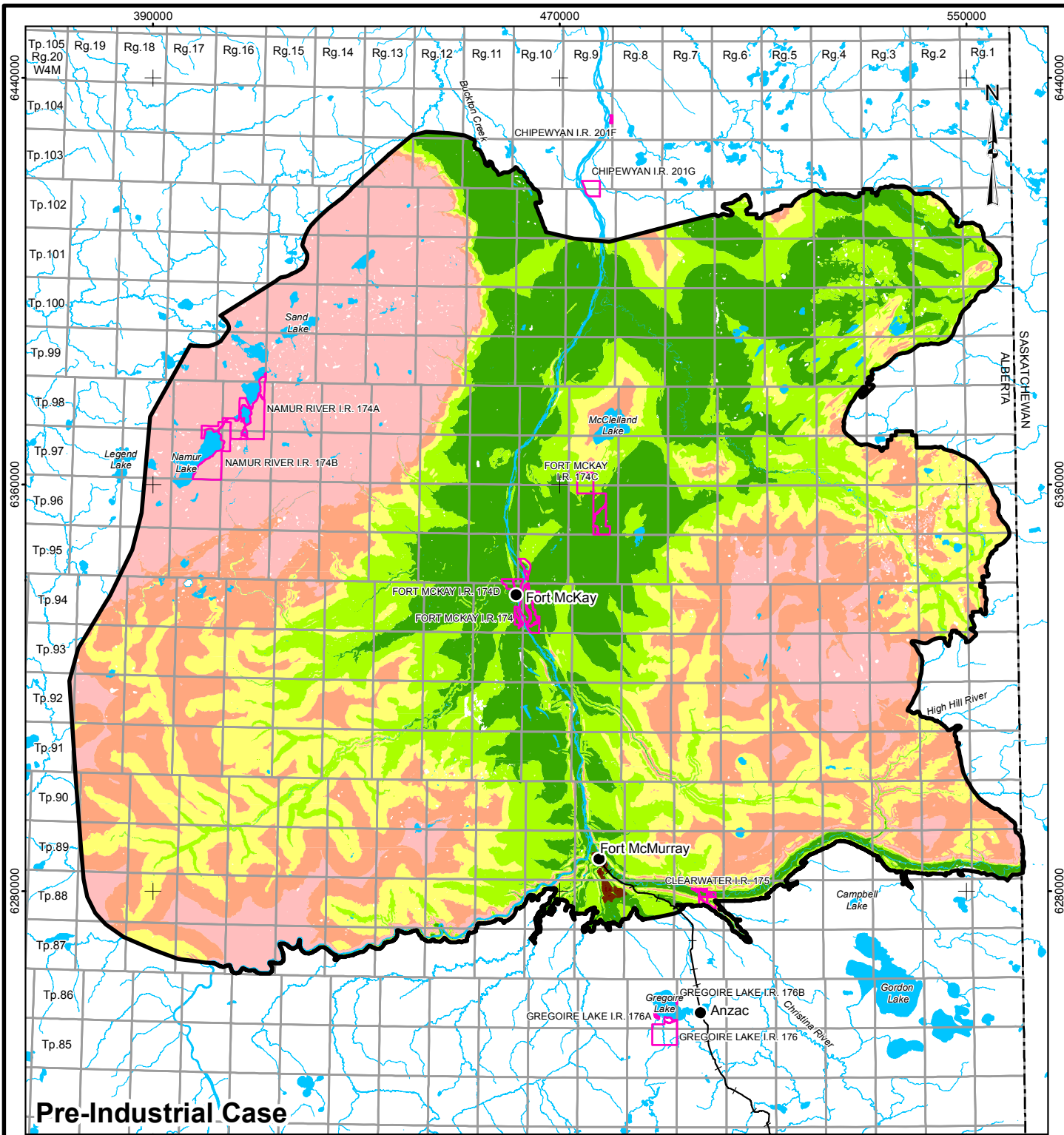


REFERENCE
 ALBERTA DIGITAL BASE DATA OBTAINED FROM ALTALIS LTD. ©
 GOVERNMENT OF ALBERTA 2013. PROVINCIAL BOUNDARY
 OBTAINED FROM IHS ENERGY INC.
 DATUM: NAD83 PROJECTION: UTM ZONE 12N

PROJECT				
PIERRE RIVER MINE PROJECT				
TITLE				
FISHER/MARTEN HABITAT SUITABILITY IN THE REGIONAL STUDY AREA				
	PROJECT	PROJECT NO.	FILE No.	
	DESIGN	BS	26 Apr 2013	SCALE AS SHOWN
	GIS	CH	20 Jun 2013	REV. 0
	CHECK	CY	27 May 2013	FIGURE: 12
REVIEW	MGJ	27 May 2013		

I:\CLIENTS\SHELL\13-1346-0001\Mapping\MXD\Wildlife Modelling\FINAL\131346000_1_WM_012_RSA-FisherMarten_GIS.mxd

I:\CLIENTS\SHELL13-1346-0001\Mapping\MXD\Wildlife Modelling\FINAL1313460001_VW_013_PIC_RSA-CanadianLynx_GIS.mxd



Pre-Industrial Case

LEGEND

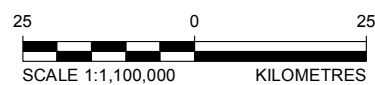
- COMMUNITY
- RAILWAY
- WATERCOURSE
- INDIAN RESERVE
- PROVINCIAL BOUNDARY
- TERRESTRIAL RESOURCES REGIONAL STUDY AREA
- OPEN WATER

DISTURBED

- EXISTING AND APPROVED URBAN AND INDUSTRIAL DISTURBANCE
- EXISTING AND APPROVED URBAN AND INDUSTRIAL LINEAR DISTURBANCE

HABITAT SUITABILITY

- HIGH
- MODERATE HIGH
- MODERATE
- MODERATE LOW
- LOW
- NIL



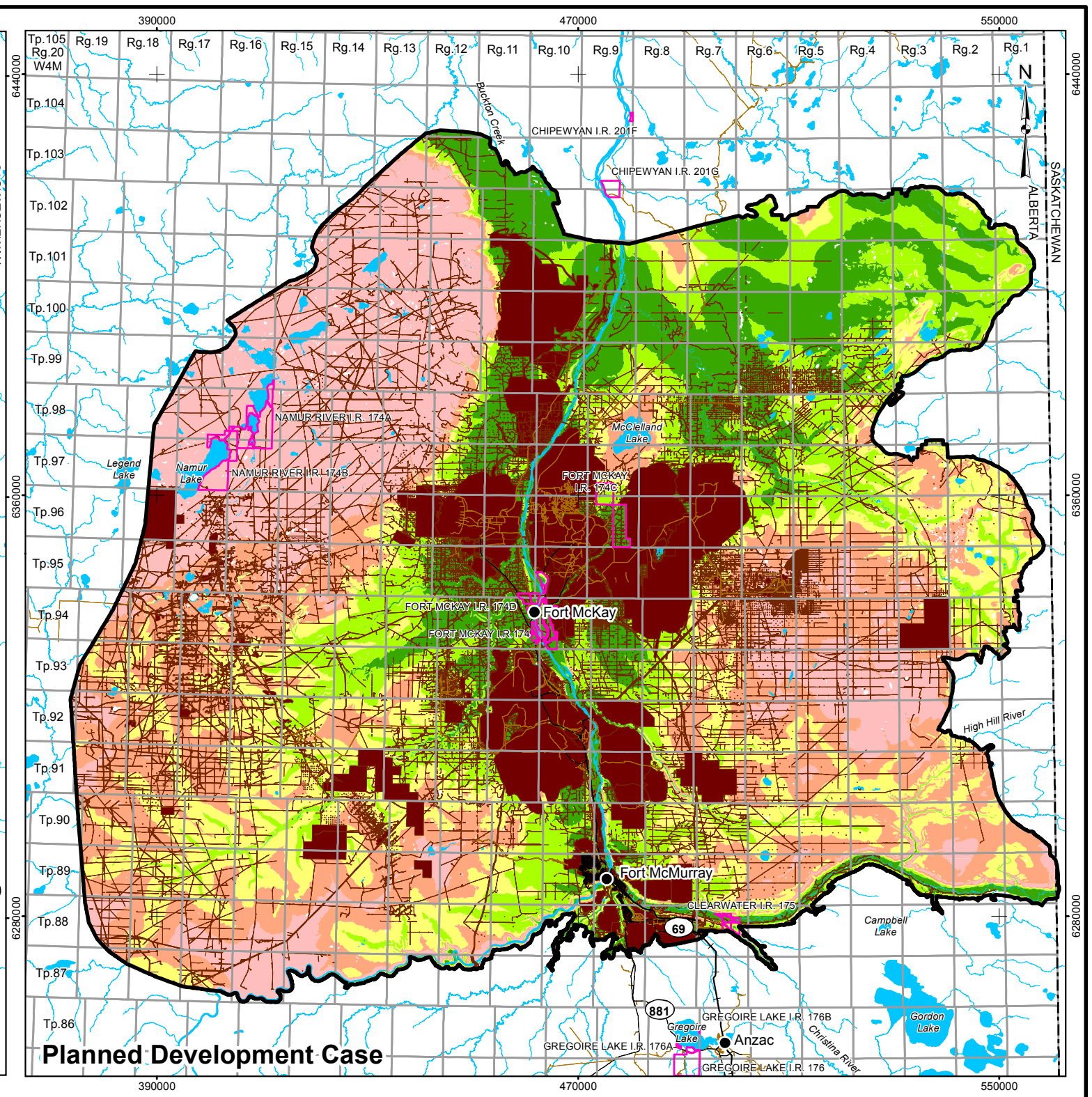
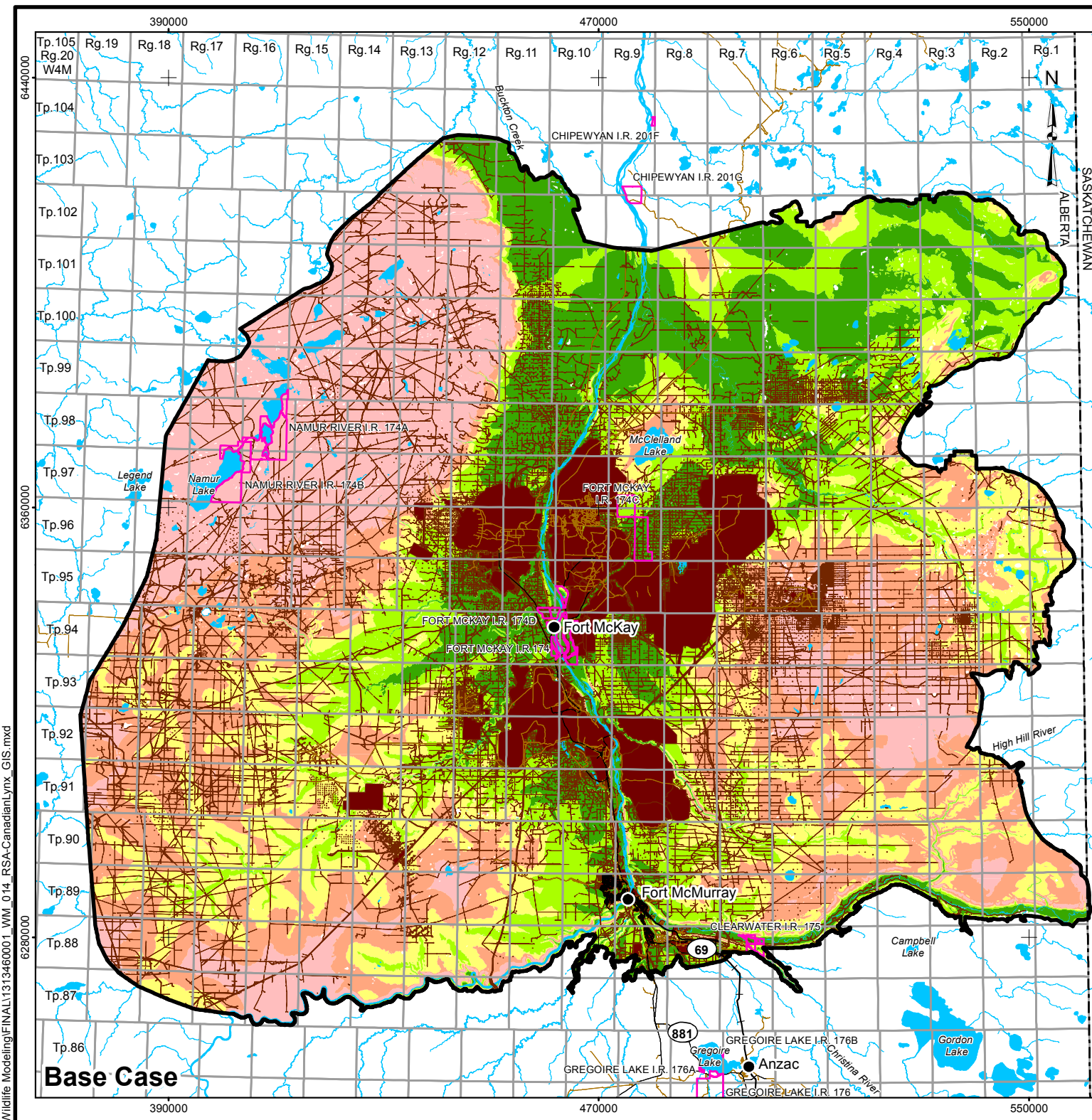
REFERENCE
 ALBERTA DIGITAL BASE DATA OBTAINED FROM ALTALIS LTD. © GOVERNMENT OF ALBERTA 2013. PROVINCIAL BOUNDARY OBTAINED FROM IHS ENERGY INC. DATUM: NAD83 PROJECTION: UTM ZONE 12N

PROJECT: PIERRE RIVER MINE PROJECT

TITLE: **CANADA LYNX PRE-INDUSTRIAL CASE HABITAT SUITABILITY IN THE REGIONAL STUDY AREA**

<p>Shell Canada Limited</p>	PROJECT	PROJECT NO.	FILE No.
	DESIGN	BS	26 Apr 2013
	GIS	CH	20 Jun 2013
	CHECK	CY	27 May 2013
REVIEW	MGJ	27 May 2013	SCALE AS SHOWN
			REV. 0

FIGURE: 13



LEGEND

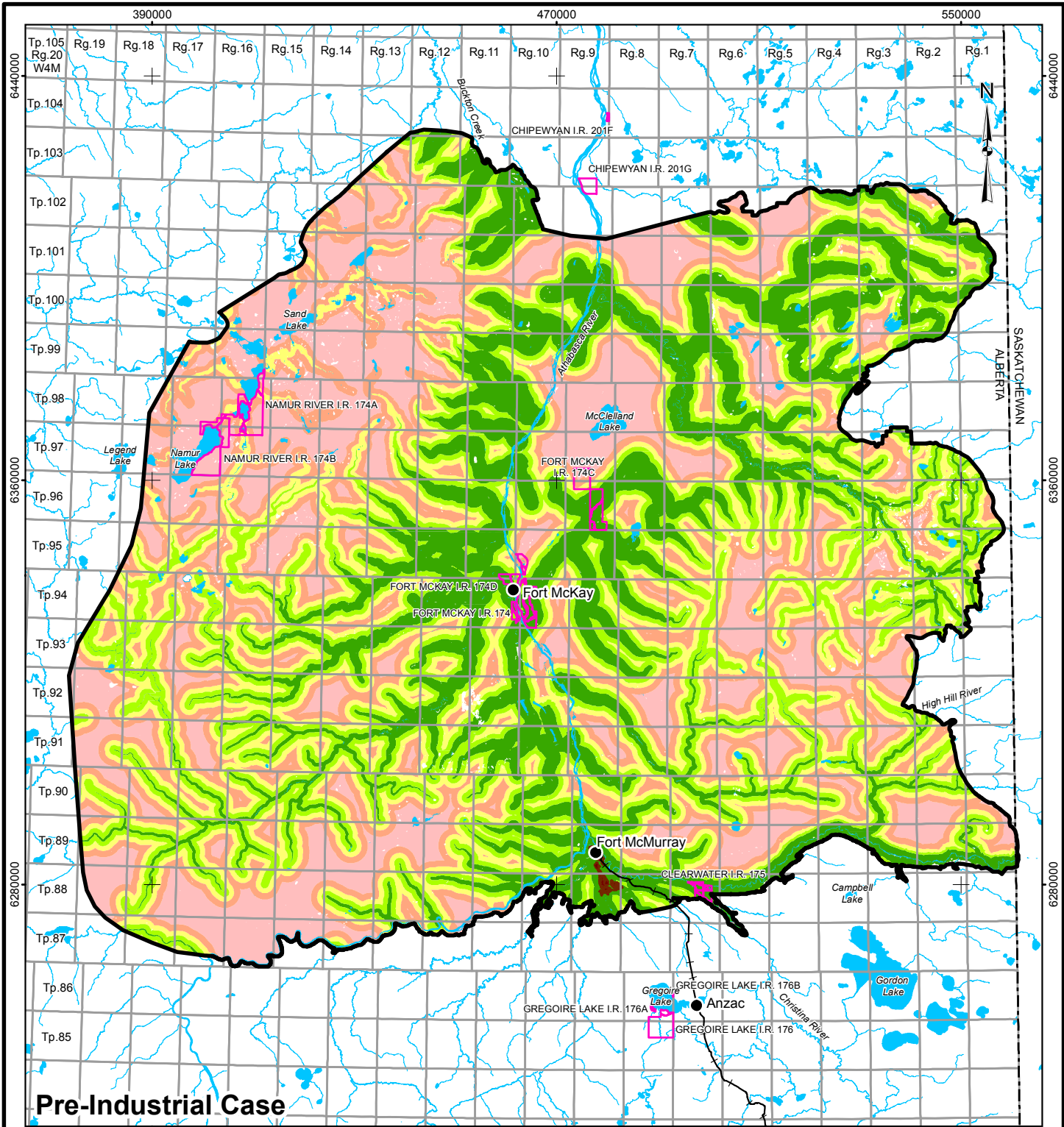
● COMMUNITY	DISTURBED	HABITAT SUITABILITY
— PAVED ROAD	■ EXISTING AND APPROVED URBAN AND INDUSTRIAL DISTURBANCE	■ HIGH
— UNPAVED ROAD	— EXISTING AND APPROVED URBAN AND INDUSTRIAL LINEAR DISTURBANCE	■ MODERATE HIGH
— RAILWAY		■ MODERATE
— WATERCOURSE		■ MODERATE LOW
□ INDIAN RESERVE		■ LOW
— PROVINCIAL BOUNDARY		□ NIL
□ TERRESTRIAL RESOURCES REGIONAL STUDY AREA		
■ OPEN WATER		



REFERENCE
 ALBERTA DIGITAL BASE DATA OBTAINED FROM ALTALIS LTD. ©
 GOVERNMENT OF ALBERTA 2013. PROVINCIAL BOUNDARY
 OBTAINED FROM IHS ENERGY INC.
 DATUM: NAD83 PROJECTION: UTM ZONE 12N

PROJECT				PIERRE RIVER MINE PROJECT	
TITLE				CANADA LYNX HABITAT SUITABILITY IN THE REGIONAL STUDY AREA	
	PROJECT	PROJECT NO.	FILE No.		
	DESIGN	BS	26 Apr 2013	SCALE AS SHOWN	REV. 0
	GIS	CH	20 Jun 2013		
	CHECK	CY	27 May 2013		
	REVIEW	MGJ	27 May 2013	FIGURE: 14	

I:\CLIENTS\SHELL\13-1346-0001\Mapping\MXD\Wildlife Modelling\FINAL\131346000_1_WM_014_RSA-CanadianLynx_GIS.mxd



Pre-Industrial Case

LEGEND

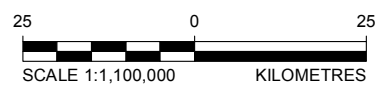
- COMMUNITY
- RAILWAY
- WATERCOURSE
- INDIAN RESERVE
- PROVINCIAL BOUNDARY
- TERRESTRIAL RESOURCES REGIONAL STUDY AREA
- OPEN WATER

DISTURBED

- EXISTING AND APPROVED URBAN AND INDUSTRIAL DISTURBANCE
- EXISTING AND APPROVED URBAN AND INDUSTRIAL LINEAR DISTURBANCE

HABITAT SUITABILITY

- HIGH
- MODERATE HIGH
- MODERATE
- MODERATE LOW
- LOW
- NIL



PROJECT: PIERRE RIVER MINE PROJECT

TITLE: MOOSE PRE-INDUSTRIAL CASE HABITAT SUITABILITY IN THE REGIONAL STUDY AREA

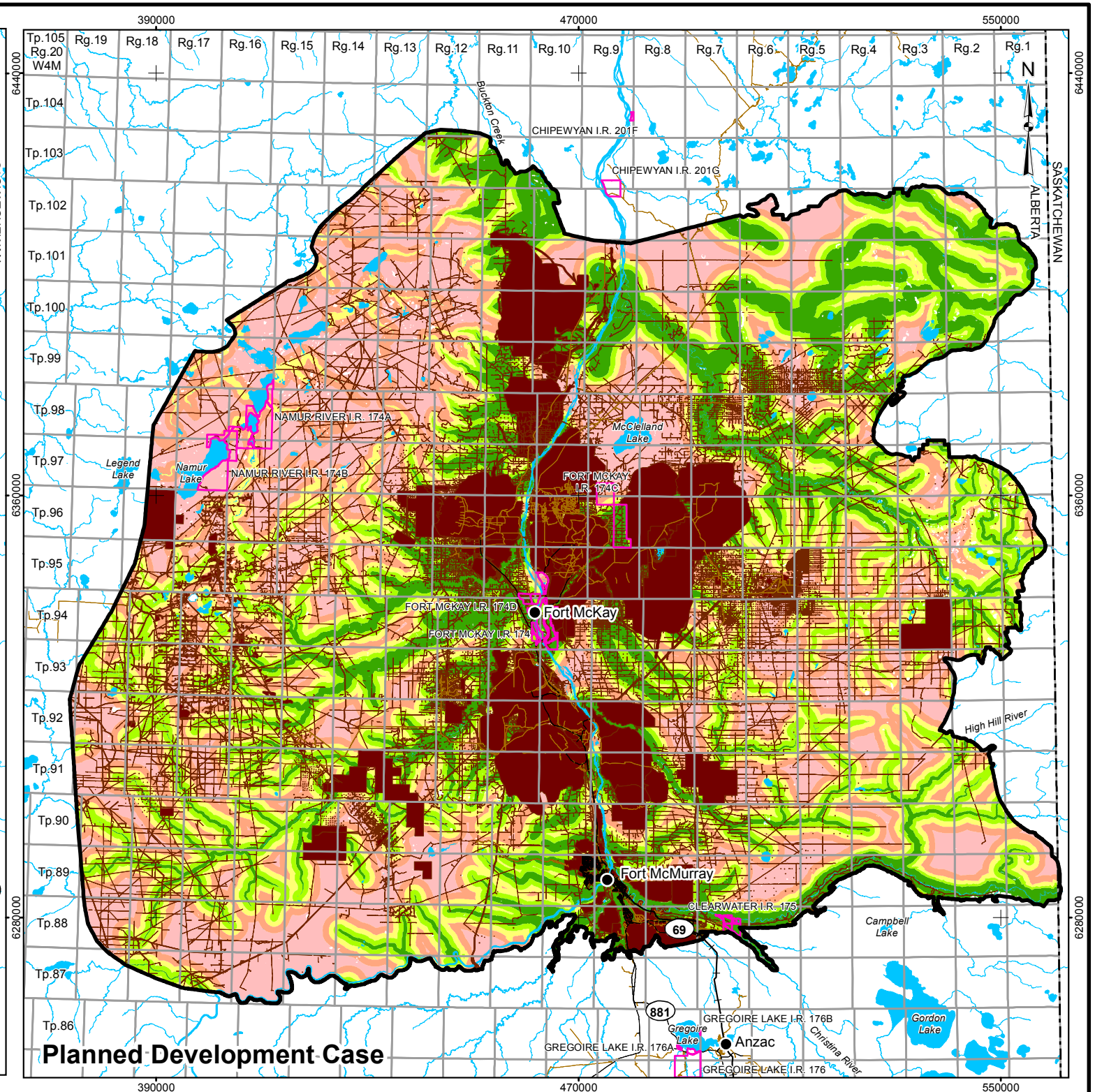
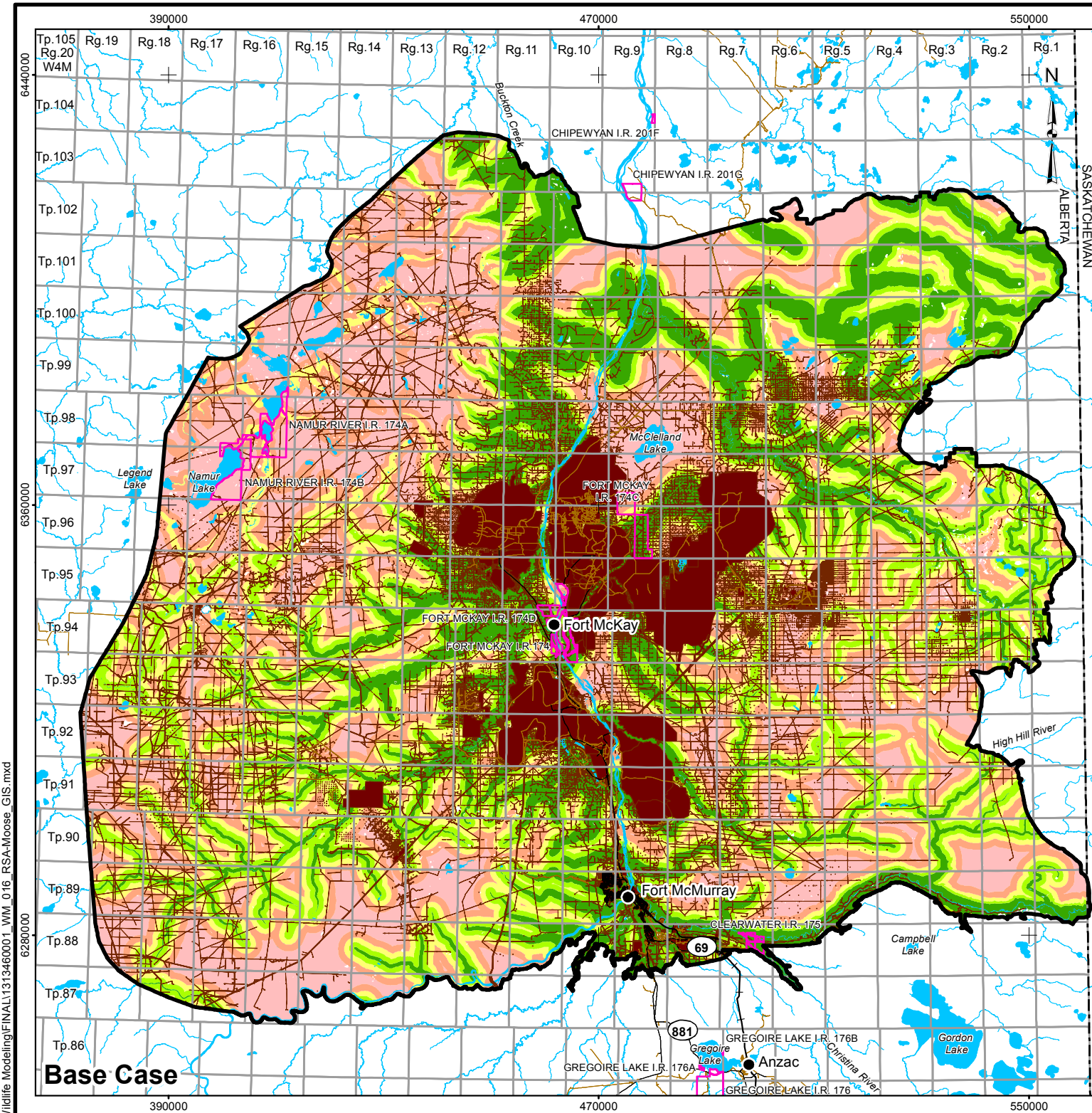
<p>Shell Canada Limited</p>	PROJECT	PROJECT NO.	FILE No.
	DESIGN	BS	26 Apr 2013
	GIS	CH	20 Jun 2013
	CHECK	CY	27 May 2013
REVIEW	MGJ	27 May 2013	SCALE AS SHOWN
			REV. 0

FIGURE: 15

REFERENCE

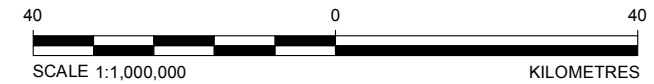
ALBERTA DIGITAL BASE DATA OBTAINED FROM ALTALIS LTD. © GOVERNMENT OF ALBERTA 2013. PROVINCIAL BOUNDARY OBTAINED FROM IHS ENERGY INC. DATUM: NAD83 PROJECTION: UTM ZONE 12N

I:\CLIENTS\SHELL13-1346-0001\Mapping\MXD\Wildlife Modelling\FINAL\1313460001_VW_015_PIC_RSA-Moose_GIS.mxd



LEGEND

● COMMUNITY	DISTURBED	HABITAT SUITABILITY
— PAVED ROAD	■ EXISTING AND APPROVED URBAN AND INDUSTRIAL DISTURBANCE	■ HIGH
— UNPAVED ROAD	— EXISTING AND APPROVED URBAN AND INDUSTRIAL LINEAR DISTURBANCE	■ MODERATE HIGH
— RAILWAY		■ MODERATE
— WATERCOURSE		■ MODERATE LOW
□ INDIAN RESERVE		■ LOW
— PROVINCIAL BOUNDARY		□ NIL
□ TERRESTRIAL RESOURCES REGIONAL STUDY AREA		
■ OPEN WATER		



REFERENCE
 ALBERTA DIGITAL BASE DATA OBTAINED FROM ALTALIS LTD. © GOVERNMENT OF ALBERTA 2013. PROVINCIAL BOUNDARY OBTAINED FROM IHS ENERGY INC. DATUM: NAD83 PROJECTION: UTM ZONE 12N

PROJECT				
PIERRE RIVER MINE PROJECT				
TITLE				
MOOSE HABITAT SUITABILITY IN THE REGIONAL STUDY AREA				
 Shell Canada Limited	PROJECT	PROJECT NO.	FILE No.	
	DESIGN	BS	26 Apr 2013	SCALE AS SHOWN
	GIS	CH	20 Jun 2013	REV. 0
	CHECK	CY	27 May 2013	
	REVIEW	MGJ	27 May 2013	
				FIGURE: 16

I:\CLIENTS\SHELL\13-1346-0001\Mapping\MXD\Wildlife Modelling\FINAL\131346000_1_WM_016_RSA-Moose_GIS.mxd